

Superconducting Magnet Power Supply and Hard Wired Quench Protection at Jefferson Lab for 12 GeV Upgrade

Probir K. Ghoshal, *Senior Member, IEEE*, Ramakrishna Bachimanchi, Ruben J. Fair, *Senior Member, IEEE*, David Gelhaar, Onish Kumar, Sarin Philip, Mark Todd

Abstract—The superconducting magnet system in Hall B being designed and built as part of the Jefferson Lab 12 GeV upgrade requires powering two conduction cooled superconducting magnets – a torus and a solenoid. The torus magnet is designed to operate at 3770 A and the solenoid at 2416 A. Failure Modes and Effects Analysis (FMEA) determined that voltage level thresholds and dump switch operation for magnet protection should be tested and analyzed before incorporating into the system. The designs of the quench protection and voltage tap sub-systems were driven by the requirement to use a primary hard-wired quench detection sub-system together with a secondary PLC-based protection. Parallel path voltage taps feed both the primary and the secondary quench protection sub-systems. The PLC based secondary protection is deployed as a backup for the hard-wired quench detection sub-system and also acts directly on the dump switch. We describe a series of tests and modifications carried out on the magnet power supply and the quench protection system to ensure that the superconducting magnet is protected against all fault scenarios.

Index Terms— Superconductivity, magnet, power supply, dump switch, quench, detection, magnet protection .

I. INTRODUCTION

THE TORUS magnet is one of the two conduction cooled superconducting magnets for 12GeV upgrade project. This upgrade is for Experimental Hall B at Jefferson Lab (JLAB) and forms part of the CEBAF Large Acceptance Spectrometer (CLAS12) [1], [2]. The magnet consists of six superconducting coils arranged to produce a toroidal magnetic field around the beam line (Fig. 1). All six coils are electrically connected in series with joints of superconducting bus-bars. They are mounted directly onto the He circuit heat exchangers (re-coolers) in order to conduction cool the splices. The overall inductance of the torus magnet is ~ 2.0 H with a stored energy of ~ 14 MJ at 3770 A [3]. The magnet is charged using a superconducting magnet power supply (MPS). This was a custom design from Danfysik based on a model 8500/T854 [4]. The MPS DC output is low voltage, high current, designed for near zero resistance loads; however, the impedance seen at the magnet/power supply output terminals can go from pure inductive to an almost pure resistive state

during a quench. Due to the requirements for high stability and low drift on a static magnetic field, a linear series-pass regulation topology was selected. The MPS circuit design allows variable sweep rates for ramping-up and down the current in steps. The torus MPS output utilizes two quadrant operation allowing for smooth and continuous ramping of the current into the magnet. Magnetic field polarity reversal is achieved by means of a mechanical switch to reverse the direction of current flow (unlike a 4-quadrant power supply). The power supply is programmed to sweep magnet currents at predetermined rates at different current levels without user intervention.

The power supply is designed to detect a quench and switches off power automatically. The hard-wired quench detection sub-system acts directly on the dump switch as part of the primary protection system. The quench protection system is capable of detecting quench-induced voltages at multiple points namely magnet coils, bus-bars and the whole magnet in the cryostat. The quench fault thresholds are set to the expected quench voltages derived from simulations. The voltage thresholds and the inductance of the magnet set upper limits on the MPS current ramp rate, in order to avoid false trips.

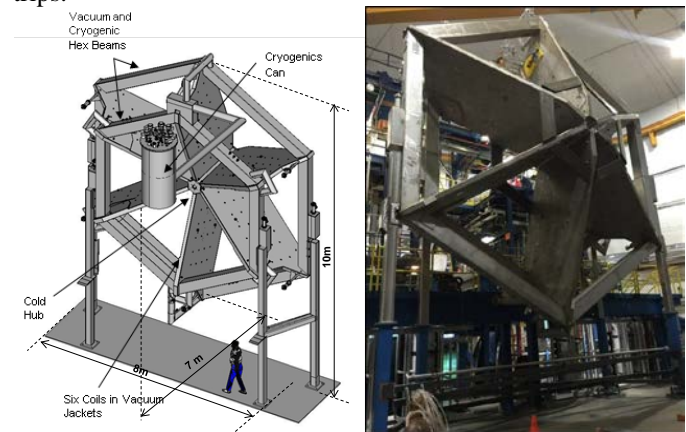


Fig. 1. The CLAS12 Torus Magnet

The magnet system was subjected to a Failure Mode and Effects Analysis (FMEA) process to evaluate the robustness of its protection system and adequacy of the instrumentation to monitor the performance of the magnet [5]. While the FMEA includes analysis of the magnet power system, cryogenics, instrumentation, mechanical stability, and many other factors, this discussion focuses solely on the MPS.

II. DC POWER SUPPLY – SUPERCONDUCTING MAGNET

The power supply employed on the torus and the solenoid magnet is a Danfysik Model 8500 rated at 4000 A/6 V, with an integrated dump resistor, 124 m Ω and 200 m Ω for the torus and the solenoid respectively [4]. The MPS incorporates

The Manuscript received May 8th 2017.

Authored by Jefferson Science Associates, LLC under U.S. DOE Contract No. DE-AC05-06OR23177. The U.S. Government retains a non-exclusive, paid-up, irrevocable, world-wide license to publish or reproduce this manuscript for U.S. Government purposes.

Probir K. Ghoshal, Ramakrishna Bachimanchi, Ruben J. Fair, David Gelhaar, Onish Kumar, Sarin Philip, Mark Todd are with Engineering Division, Jefferson Lab, Newport News, VA (USA), 23606. Corresponding author: P. K. Ghoshal (e-mail: ghoshal@jlab.org)

Color versions of one or more of the figures in this paper are available online at <http://ieeexplore.ieee.org>.

Digital Object Identifier (inserted by IEEE)

features designed to mitigate or prevent failure modes during the magnet operation. These features include: controlled current ramping (up or down), fast dump switch and resistor to de-energize the magnet, integrated polarity reversal switch, slow dump capability, and multiple DC current transducers for current based interlocks. Additionally, a separate rack mounted PLC based controller initiates/programs ramp rate of the current, monitor's interlocks on the magnet, and checks the overall health of the magnet. Salient MPS and energy dump specifications are given in Table I.

TABLE I
TORUS - DC POWER SUPPLY AND FAST ENERGY DUMP SPECIFICATIONS

Description	Specification
Output current/voltage	± 4000 A / ± 6 VDC
Ramp rate	Variable: ± 0.2 to ± 3.0 A/s
Supply voltage	480 V/3- Φ /60 Hz.
Ambient temperature	15-35 $^{\circ}$ C
Cooling water (flow, temperature)	60 l/m, 15-35 $^{\circ}$ C
Pressure	300 psig
Ground Isolation	>1.0 M Ω
Quench protection	Fast DC output breaker

Magnet	I _{OP} (A)	L _{TOT} (H)	E _{ST} (MJ)	V _{DUMP} (V)	R _{DUMP} (Ω)	T _{MAX} ($^{\circ}$ C)
Torus	± 3770	2.0	14.21	< 500	0.124	<350
Solenoid	± 2416	6.0	17.50	< 500	0.200	<350

III. SUPERCONDUCTING MAGNET POWER SUPPLY TEST

As part of the magnet energization process and readiness review, hi-pot, interlock functionality, full output current test with shorted terminals, and evaluation of the test dump switch opening times were established towards system realization.

A hi-pot test, (with measurement of the leakage current) was successfully completed at 1 kV. To perform the Hi-Pot test, ground fault leakage current resistor was temporarily removed. Interlock functionality was also successfully tested and verified. Subsequently, a full output current test at 4000 A was successfully performed upon shorting the terminals after the water cooled leads.

The power supplies employed for the torus and the solenoid were adequate by design having a total time delay of <750 ms between quench set threshold is exceeded and the time for the dump switch to fully open during energizing & operation for magnet safety. With similar power supplies across the laboratory, the suggestion was to improve on the overall delay using the mechanical breaker. Danfysik system consists of an integrated mechanical breaker along with quench detector (QD). Any improvement on the overall delay helps to keep the hot spot temperature in the superconductor low (<150 K) during a quench event. Switching the power supply off during any magnet quench condition is crucial for the safety of the superconducting magnet and the MPS. The timing diagram for the quench detection process is shown in Fig. 2. The time is divided into three parts – (a) T_q (s) is the time between quench initiation and quench threshold is exceeded, (b) T_{qi} (s) is the time between when the quench threshold is exceeded and the quench-interlock relay contact opening, which is a constant attributed to the associated electronics (Fig. 3), and (c) T_{dsw} (s) is the subsequent time for the dump switch to

fully open. As shown in Fig. 4, T_{qi} is measured to be about 12 ms, T_{dsw} is measured to be about 580 ms and T_{total} is about 600 ms.

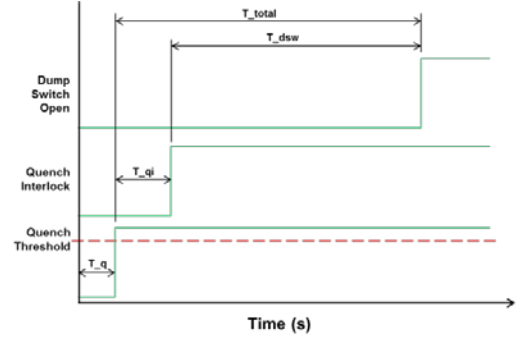


Fig. 2. Representation of timing diagram for quench detection

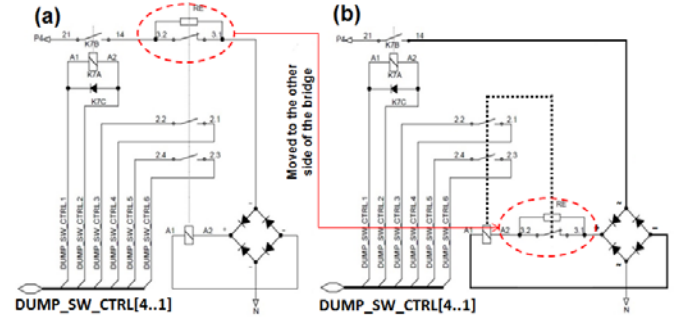


Fig. 3. Dump-switch coil configuration, (a) Danfysik factory setting, (b) with JLab modification

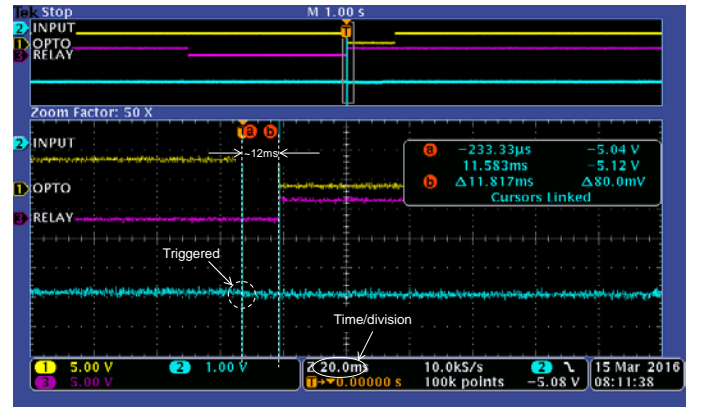


Fig. 4. Traces showing quench interlock detection timing

A complete quench detection timing analysis and the modifications of the dump switch timing circuit have been carried out at JLab. The initial tests carried out on the MPS with the factory setting for the timing of the opening of the dump switch measured ~600 ms, shown in Fig. 5, based on the factory configuration shown in Fig. 3(a). After conferring with the MPS and the dump switch manufacturers, the dump switch circuitry was re-configured as shown in Fig. 3(b). The re-configuration involved changing the series connected dump-switch coil resistor to be in parallel with the dump-switch coil. The value of the resistor, R_E, was also increased from 1.0 to 1.25 k Ω in order to decrease the switching time. The modification significantly reduced the T_{total} time to ~60 ms as shown in Fig. 6. The overall time from quench initiation to dump switch opening is estimated to be less than 120 ms (T_{qi} = 30 ms and T_{dsw} = 90 ms) which is significantly lower than

the 600 ms measured prior to the modifications [6].

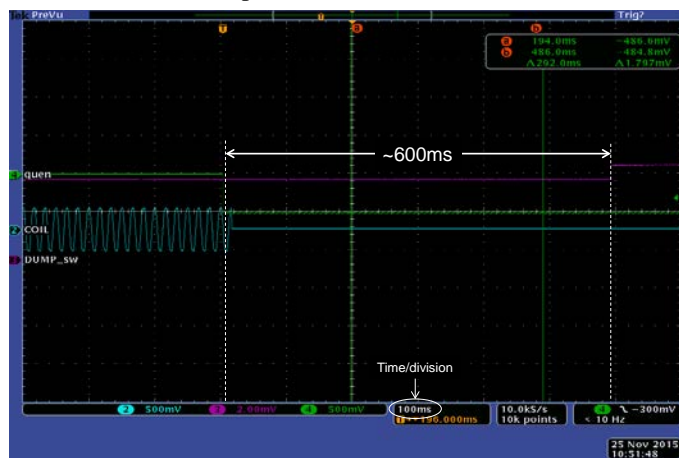


Fig. 5. Traces showing the dump-switch timing with factory setting from vendor is about 600 ms to open

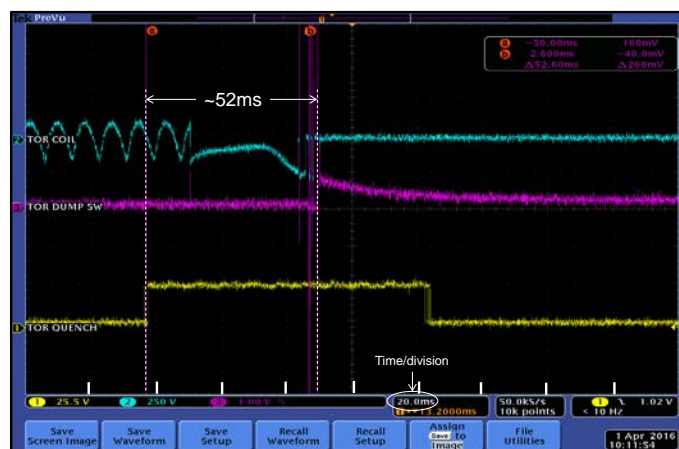


Fig. 6. Traces showing the dump-switch timing after JLab modification is about 60 ms to open

IV. QUENCH DETECTOR BOARD CONFIGURATION

The design of the quench protection (Fig. 7) and voltage tap sub-systems were driven by the anticipated level of voltages developed during a magnet quench and a full FMEA process [7]-[9]. A dual protection scheme is employed, where a primary hard-wired analog circuit works in conjunction with a digital PLC based circuit. Parallel paths feed the primary and secondary quench protection sub-systems. The primary hard-wired quench detection system was provided as standard by Danfysik. Each quench detection module consists of four differential input channels. Each input channel is capable of local balancing and varying/adjusting the delay that acts directly to convey a relay contact state for the MPS to open the fast dump switch. The secondary quench detection is performed in the PLC, where voltage tap data is fed from a second dedicated unit with eight 4-channel N9239 24-bit analog input modules. The digitized voltages are compared against user-selected thresholds, in software, to turn the MPS off and activate the fast dump switch, when a fault condition is detected.

Integrated QD units are capable of detecting the fault conditions that may arise both in the superconducting magnet coils or in the vapor cooled current leads at least across two channels. The magnet diagnostic system (MDS) is associated

with the control and the data acquisition sub-systems. The MDS has been engineered to include a hard-wired interlock safety system. It will protect each magnet system in the event any selected magnet parameter or limit exceeds user-set thresholds. The MDS primarily monitors voltages across the coils, magnet water-cooled bus bars, splices, and the vapor cooled current leads.

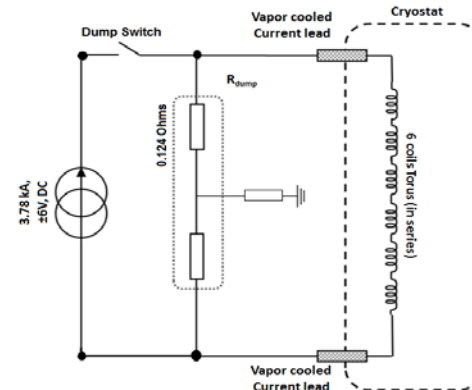


Fig. 7. Schematic arrangement of Torus magnet dump resistor in protection circuit

The quench protection system, mechanical dump switch, interlocks, and remote control systems were all tested and verified for reliable operation/functioning as expected during normal steady state magnet operation at 3770 A. During the commissioning of the MPS, maximum current applied across the shorted terminals was 4 kA in the forward and the reverse directions. Gains across the channels of the QD's (end of comparator) were carefully tuned and set to hard wired detection threshold voltages. The threshold voltages are based on the results of quench analysis under various conditions. The differential output voltages across the QD channels (output of the amplifier into the comparator) are adjustable over the range of 2 mV to 2.0 V under fault condition. The quench detection unit triggers the energy dump circuit, when a fast magnet current ramp down is sensed via a direct analog interlock, once the differential set threshold is reached.

For risk assessment and mitigation (RAM) planning, rigorous and repetitive tests were carried out with an artificial quench signal (differential voltage) sent to the quench protection system. Both primary and the secondary quench protection system tests were completed satisfactorily for reliability and repeatability. The MPS has compatibility using RS 232/422/485 remote control access with in-built safety features, e.g. ramping down the current automatically in the event of a power loss, a temperature rise, an open interlock, etc.

One of the design features in the quench detectors of the torus magnet was to have a patch panel for routing the voltage signals and to allow for local diagnostics. The voltage taps, mentioned earlier, are wired into the input terminals on the patch panel. These current limited signals are then routed to the quench detector or the data acquisition (DAQ) circuitry, sometimes in parallel. DAQ consists of isolated amplifier feeding the input of National Instruments (NI) ADC module, sampled using N.I.'s CompactRIO (cRIO). Further, cRIO transmits the sampled data to a PLC, which then is used for decision making. The voltage tap signals meet NFPA 70E

Class-I limits with the addition of current limiting resistors. These current limiting resistors, in turn, affect the input impedance of the factory configured QD circuits and their associated DAQ channels. The modifications were carried out on the standard off-the-shelf QD boards from Danfysik in order not to exceed pre-determined circuit-loading requirements. With QD and DAQ systems in parallel, the result in a complex voltage divider network that needed the modifications as carried out to balance the circuit/s. To modify the QD boards to comply with Class-I requirements, it was necessary to overcome the balancing issue across the voltage taps in QD's that share a common node with DAQ's in parallel as shown in Fig. 8. The DAQ impedance, primarily from the op-amp with 380 k Ω and QD impedance, ~ 15 k Ω , has two 150 k Ω current limiting resistors (CLRs) connected in series. This suggests that the total impedance seen across the DAQ only is of the order of ~ 680 k Ω in comparison to the total impedance across the QD's only which is ~ 315 k Ω . Therefore, the imbalances with the DAQ included produce significant dips in the measured voltages across the magnet due to the impedance mismatch. QD simulation results along with the measured values are shown in Fig. 9.

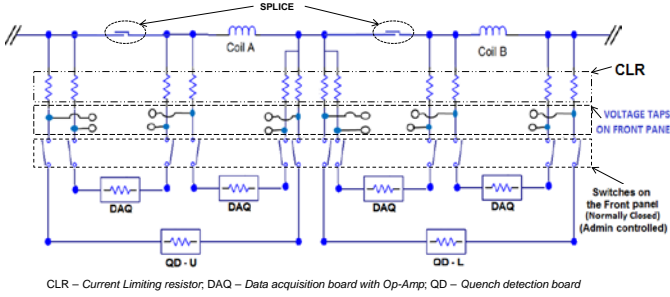


Fig. 8. Circuit used for impedance-matching simulations – CLR, Op-Amp, QD board

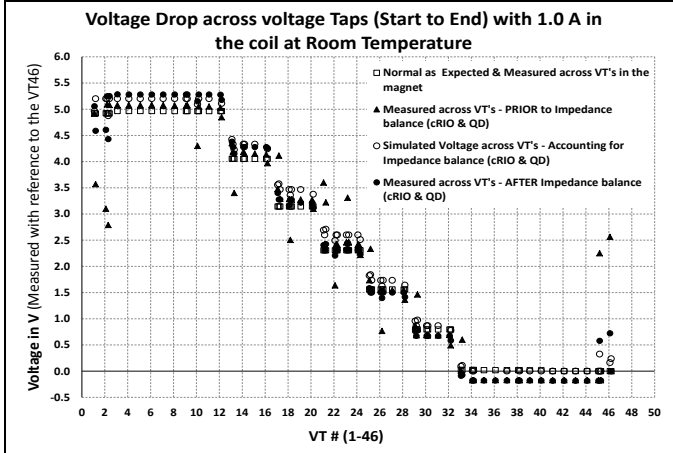


Fig. 9. Voltage across QD's and voltage taps across torus magnet – simulated & measured with adopted impedance matching modifications

In order to mitigate the impedance mismatch, a number of simulations using LTSpice were carried out with varying CLRs and resistors on the QD board (modular design in order to keep consistent across channels and spares) [10]. These simulations capture all QD and DAQ setup presets across all channels envisaged for the torus magnet protection system. The balancing potentiometer and divider are modified in order to get the same linearity of input voltage. The optimized

solution is shown in Table II, complying with all Class-I requirements.

After carrying out the modifications on the input resistors (based on the simulations), measured and simulated values agree. The worst case observed before modifications is at the start and end of the magnet leads. It is measured ~ 2.75 V compared to ~ 4.4 V after modification, against 5.0 V as simulated. The ΔV of 600 mV can be attributed to three DAQ channels connected to a single node compared to one DAQ channel.

TABLE II
TORUS QD RESISTOR VALUES – BEFORE AND AFTER IMPEDANCE MATCHING

CLR (k Ω)		QD Impedance (k Ω)		Potentiometer resistance (k Ω)		Dividing Resistors on the QD board (k Ω)	
X	Y	X	Y	X	Y	X	Y
150	50	14.75	300	0.1	2.0	2.0	49.9

X: Before modifications carried out

Y: Optimized values after carrying out simulations and adopted in the final configuration

V. BENCH SETUP AND TESTS

As part of a RAM program at JLab, the modified QD boards were tested on the bench with a voltage-divider circuit and a potentiometer for adjusting the balance, as shown in Fig. 10, before incorporation into the protection system. This adjustable voltage divider circuit mimics quench threshold voltages from 100 mV to 2.25 V. In the bench setup, output of the adjustable voltage-divider circuit was connected to 50 k Ω series resistors going to the upper and the lower input sections of the quench voltage detection channel. The tests confirmed that 50 k Ω series resistors were indeed suitable to allow setting of the gains on the QD boards.

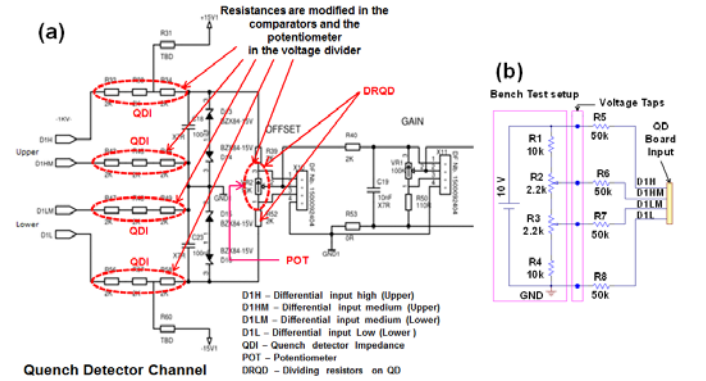


Fig. 10. (a) Schematic layout generic QD board circuit diagram provided by Danfysik and modifications carried out on the boards (b) schematic layout of the test set up after modifications on the board

VI. SUMMARY

Both power supplies for superconducting magnets in Hall B at JLab were commissioned in May 2016. Both power supplies are modified to: (a) accommodate the impedance matching of CLR with QD and DAQ input impedance, (b) decrease overall fast dump switching time after a quench event to <120 ms. Successful multiple fast dumps up to 3.0 kA were carried out with the integrated MPS on the torus during the magnet system commissioning phase, with triggering via both primary and the secondary protection sub-systems. The torus MPS and magnet are successfully integrated and are fully

operational in hall B.

ACKNOWLEDGMENT

This material is based upon work supported by the U.S. Department of Energy, Office of Science, Office of Nuclear Physics under contract DE-AC05-06OR23177. The U.S. Government retains a non-exclusive, paid-up, irrevocable, world-wide license to publish or reproduce this manuscript for U.S. Government purposes. The authors would like to thank Bob Flora (FNAL), S. Prestemon (LBNL), Y. Iwasa (MIT) and S. Lassiter (JLab) for their valuable suggestions during reviews. The authors would also like to acknowledge the support of Hall B staff and in particular the members of EES-DC Power group during the study, conducting test and discussion.

REFERENCES

- [1] C. Rode, "Jefferson Lab 12 GeV Upgrade," *Adv. Cryo. Eng. (Proc. Of Cryogenic Engineering Conference, CEC)*, Vol. 1218, 26-33, 2010
- [2] R. J. Fair, G. L. Young, "Superconducting Magnets for the 12 GeV Upgrade at Jefferson Laboratory", *IEEE Trans. on Appl. Supercond.*, V25 (3), 2015, DOI- 10.1109/TASC. 2014.2365737.
- [3] P. K. Ghoshal, *et al.*, "Electromagnetic and Mechanical Analysis of the Coil Structure for the CLAS12 Torus for 12 GeV Upgrade," *IEEE Trans. Appl. Supercond.*, V25 (3), Jun. 2015, DOI 10.1109/TASC.2014. 2382604
- [4] C. Neilsen, "Design Report USA 502337-201, Hall B, Torus/Solenoid MPS" *MPS 854 - Danfysik System 8500*, www.danfysik.com, June 2014.
- [5] P. K. Ghoshal *et al.*, "FMEA on the Superconducting Torus for the Jefferson Lab 12 GeV Accelerator Upgrade", *IEEE Trans. Applied Superconductivity*, V25 (3), June 2015, DOI 10.1109/TASC.2015. 2388591.
- [6] S. Philip, "JLab Hall-B Torus Power Supply Setup and Acceptance Testing", *Jefferson Lab Analysis report B000000401-R017*, April 2016.
- [7] P. K. Ghoshal, R. Rajput-Ghoshal, "Quench analysis – Single coil Quench analysis using Wilson model (analytical)", *Jefferson Lab Analysis report B000000401-A012*, April 2013.
- [8] V. Kashikhin, L. Elouadhiri, P. Ghoshal, D. Kashy, A. Makarov, O. Pastor, L. Quettier, G. Velev, and M. Wiseman, "Torus CLAS12-Superconducting Magnet Quench Analysis," *IEEE Trans. Appl. Supercond.*, V24(3), Jun. 2014, DOI 10.1109/TASC.2014.2299531
- [9] P. K. Ghoshal, G. Biallas, R. J. Fair, C. Luongo, R. Rajput-Ghoshal, "Design of quench tolerant sections in coil leads and splices for torus magnet at Jefferson Lab", *Jefferson Lab Analysis report B000000401-A027* (Internal Doc. #DOE/OR/23177-3628; JLAB-ACE-15-2195), May 2016.
- [10] *Open source design tool* for electrical engineers, "LTspice"; Online at <http://www.linear.com/designtools/software/>

Probir K Ghoshal (M'05–SM'11) received the B.E. (Hons.) degree in electrical engineering from the Government Engineering College, Bilaspur (India), the M.Tech. degree in cryogenic engineering from Indian Institute of Technology, Kharagpur (India) and the Ph.D. degree in electrical engineering from University of Cambridge, Cambridge (England).

Probir worked as Project engineer/Assistant manager for 6 years, since Feb 1995 in engineering and cryogenic industry. In 2001 Probir relocated to Oxford in the UK working for Oxford Instruments NanoScience involved with various superconducting magnets including world's highest fully superconducting magnet 22.5T using both LTS & HTS till December 2010 as Principal Engineer. Dr. Ghoshal moved to the USA working for General Electric - Global Research Center, NY (USA) from December 2010 till January 2013 on applied superconductivity, and cryogenics. Since January 2013, Probir has been working as Senior Staff Engineer (Superconducting Magnet Engineer) at the Thomas Jefferson National Accelerator Facility, Virginia on 12 GeV accelerator upgrade.

Dr. Ghoshal also contributed a chapter to High temperature superconductors (HTS) for energy applications, with Woodhead Publishing Ltd., Cambridge (UK) in 2011. Dr. Ghoshal is a technical editor and reviewer of Journal IEEE Trans. Appl. Sc., reviewer of Superconducting Science and Technology (Institute of Physics), UK. Probir is a Chartered Engineer,

Member of Institute of Engineering and Technology (UK), Senior Member of IEEE (USA), Member of Indian Cryogenic Council, and Member of Indian Vacuum Society. Dr. Ghoshal has publications in review journals and patents.

Ramakrishna (Rama) Bachimanchi received the B.E. degree in electronics and communication engineering, Vasavi College of Engineering, Osmania University, Hyderabad (India) in 2004 and M.S. in computer engineering, George Mason University, Virginia (USA) in 2007.

Rama worked as a graduate teaching and research assistant within department of electrical & computer engineering at George Mason University, Virginia (2006–2007). Since March 2007, Rama has been working as Staff Engineer at the Thomas Jefferson National Accelerator Facility, Virginia within electrical engineering division. Rama primarily contributes to circuit design, PCB layout, system design, testing, integration, and FPGA & microprocessor implementation. Rama acquired skills working on accelerator RF systems - data acquisition, digital signal processing, cavity control, etc.

Ruben J. Fair (SM'11) obtained his B.Sc. (Hons) Eng. in electrical engineering in 1985 and his PhD in electrical engineering in 1991, both from Imperial College of Science and Technology in London, England.

He joined GEC-Alsthom Large Machines Ltd. in 1988 as a Hydrogenerator Design Engineer and left in 1994 to join Oxford Instruments (NMR Division) as a Design and Development Engineer working on a range of new superconducting magnets, including the world's first persistent 900MHz NMR magnet. In 1999, Ruben accepted the position of Principal Engineer at Oxford Instruments (Research Instruments) to lead a team of engineers developing superconducting magnets and ultra-low temperature refrigerators for the Physics community. In 2005, Ruben was selected to lead the New Product Introduction Engineering team at Oxford Instruments Nanoscience. He left in 2007 to join Converteam (now General Electric Power Conversion) where he led a team of engineers to develop the world's first high temperature superconducting hydrogenerator and also set up a Cryogenics Laboratory. In 2010, Ruben was recruited by the General Electric Global Research Center in Niskayuna, New York, USA to develop a strategic road map for a range of superconducting machines. While at the research center, he led a team which was awarded funding from the Department of Energy to design a superconducting wind turbine generator. Ruben accepted a position as Principal Engineer at the Jefferson Laboratory, Newport News, Virginia in 2013 to lead a team overseeing the design, build, installation and commissioning of 8 superconducting magnets for the 12 GeV accelerator upgrade project.

Dr. Fair also contributed a chapter to High temperature superconductors (HTS) for energy applications, with Woodhead Publishing Ltd., Cambridge (UK) in 2011. Ruben is a Chartered Engineer, Member of the Institute of Engineering and Technology (UK), Senior Member of IEEE (USA). Dr. Fair has publications in review journals and patents

M. David Gelhaar served in the U.S. Navy from October 5, 1982 until honorably discharged in August of 1990. During that time, assisted in the pre-commissioning, initial sea trials, and original crew of the USS Theodore Roosevelt in the Reactor Department and a Reactor Operator and Reactor Technician and served at the Maintenance Group Supervisor for #2 Reactor RC Division. After discharge, took a position in the RF Group at Thomas Jefferson National Accelerator Facility, Virginia and was responsible for the Low Level Checkout for all original High Power Amplifier and Cathode Power Supply system and later moved to the DC Power Group to assist with maintenance, repair and reliability improvements and took responsibility for the 20 Amp trim and shunt system upgrades for the new 12 GeV program. Mr. Gelhaar helped 12GeV integrating new high power Danfysik power supplies to the superconducting magnets.

Onish Kumar received BS degree in electrical engineering from University of Illinois at Urbana-Champaign (USA) in December 2010.

Onish worked as an Undergraduate research assistant at University of Illinois at Urbana-Champaign (2010-11). Onish Joined Bitrode Corporation, St. Louis, Missouri in March 2011 as a Product Engineer, where he designed linear and SMPS for battery industry. In the year 2014, Onish joined The Thomas Jefferson National Accelerator Facility, Virginia as Staff Engineer in DC-Power group, where he contributes in the development of various circuit designs; PCB board schematics and layouts, system integration & testing, and FPGA based design, etc.

Sarin Philip (M'11) received a B.Sc. in electrical engineering from Virginia Technology, Blacksburg, Virginia (USA) in 2004.

Sarin has been employed as an engineer in the electrical engineering group at Jefferson Lab since 2005, working on accelerator magnets and power

supplies. Since 2015, Sarin has been group leader of the DC Power & Magnets division within electrical engineering group.

Mr. Philip is a Member of IEEE (USA).

Mark A. Todd earned an AAS in electronics technology in 1997 at Tidewater Community College in Virginia Beach, Virginia (USA).

Mark served for over 7 years in the United States Air Force as an Instrumentation Mechanic, building, installing and repairing telemetry electronics systems for various airborne platforms. At the Command level, Mark worked as an Intelligence Analyst, gathering, disseminating and analyzing relevant communications, signals and photographic intelligence. Mark has over 20 years of experience working with high power technology as well as electro-mechanical systems, motion control and telecommunications equipment.