

Light baryon resonances from a coupled-channel study including $K\Sigma$ photoproduction

D. Rönchen,^{1,*} M. Döring,^{2,3,†} U.-G. Meißner,^{4,1,5,‡} Chao-Wei Shen,¹ and Yu-Fei Wang¹

¹*Institute for Advanced Simulation and Jülich Center for Hadron Physics,
Forschungszentrum Jülich, 52425 Jülich, Germany*

²*Institute for Nuclear Studies and Department of Physics,
The George Washington University, Washington, DC 20052, USA*

³*Thomas Jefferson National Accelerator Facility,
12000 Jefferson Avenue, Newport News, VA, USA*

⁴*Helmholtz-Institut für Strahlen- und Kernphysik (Theorie) and Bethe
Center for Theoretical Physics, Universität Bonn, 53115 Bonn, Germany*

⁵*Tbilisi State University, 0186 Tbilisi, Georgia*

The Jülich-Bonn dynamical coupled-channel approach is extended to include $K\Sigma$ photoproduction off the proton. Differential cross section and (double) polarization data for $K^+\Sigma^0$ and $K^0\Sigma^+$ are analysed simultaneously with the pion- and photon-induced production of πN , ηN , $K\Lambda$, and $K\Sigma$ final states, totaling more than 67,000 data points for center-of-mass energies $W < 2.4$ GeV. Based on the fit results the spectrum of N^* and Δ resonances is extracted in terms of pole positions and residues. We discuss the impact of the $\gamma p \rightarrow K\Sigma$ channels in detail and investigate the influence of recent polarization data for ηp photoproduction.

PACS numbers: 11.80.Gw, 13.60.Le, 13.75.Gx.

I. INTRODUCTION

The photoproduction of the $K\Sigma$ final states provides ample opportunity to refine our current picture of the light baryon resonance spectrum at medium energies. On the one hand, complementing $K\Lambda$ as a strangeness channel, it holds the promise to reveal states that couple only weakly to πN or ηN . Many more states have been predicted at energies beyond 1.7 GeV, e.g. by quark models [1, 2], Dyson-Schwinger calculations [3, 4], or lattice simulations [5–9], than have been observed by traditional partial-wave analyses [10–12] of πN scattering. Recently, the use of meson and baryon operators in lattice QCD [7] has enabled the extractions of phase shifts encoding baryonic resonance widths [9]. In contrast to $K\Lambda$, however, $K\Sigma$ is mixed-isospin, and holds valuable information pertaining Δ resonances. Compared to the N^* states, fewer Δ states with a four or three star rating – meaning the existence of the state is certain or very likely – are listed by the Particle Data Group [13]. While in the past experimental information on the $K\Sigma$ channel were limited to pion-induced reactions, with a partially problematic data base [14, 15], in the last decades photoproduction experiments like ELSA, JLab or MAMI have contributed significantly to a much better foundation of the light baryon spectrum with a large number of high-quality data sets for several hadronic final states, see, e.g., Refs. [16–18] for reviews or Ref. [19] for prospects of upcoming strangeness production experiments at BGOOD. Among the different photoproduction channels, the $\gamma N \rightarrow KY$ reactions are unique candidates for a “complete experiment” [20], as

the self-analyzing weak decay of the hyperons facilitates the determination of recoil polarization observables. A “complete experiment” describes a set of eight specific observables that are, in principle, sufficient for an unambiguous determination of the pseudoscalar meson photoproduction amplitude, up to an overall phase [21, 22] and without taking into account realistic experimental uncertainties [23–25]. Such a set always includes recoil polarization measurements. In Ref. [26] complete sets of polarization observables were also studied for pion-nucleon scattering and electroproduction of pseudoscalar meson, see also Refs. [27–29].

Theoretical approaches to $K\Sigma$ photoproduction are ranging from chiral perturbation theory [30, 31] or chiral unitarized frameworks [32, 33] for studying the threshold region, over quark model calculations [34], to effective Lagrangian approaches [35, 36], isobar models [37–41] including Kaon-MAID [42, 43], and Regge-plus-resonance parametrizations [44].

Since the threshold energy of the $K\Sigma$ channel is $W \sim 1686$ MeV, where many other meson-baryon channels are already open, a more comprehensive picture of the resonance spectrum can be obtained from coupled-channel frameworks. The Bonn-Gatchina multichannel partial-wave analysis comprises a large data base for many different pion- and photon-induced reactions [45], see Ref. [46] for the recent solution BnGa2019. The Gießen group applied a multi-channel K -matrix formalism with a microscopic background to analyse $K\Sigma$ photoproduction in Ref. [47]. Dynamical coupled-channel (DCC) models are based on effective Lagrangians and represent an especially capable approach to extract the resonance spectrum in terms of complex poles and residues, as they include or at least approximate theoretical constraints of the S -matrix like analyticity, left-hand cuts and complex branch points, and two or three-body unitarity. The

* d.roenchen@fz-juelich.de

† doring@gwu.edu

‡ meissner@hiskp.uni-bonn.de

ANL/Osaka group analysed Kaon photoproduction in a DCC framework in Refs. [48, 49] with updated results in Ref. [50] available also at a web site [51]. In the present study we apply the Jülich-Bonn (JüBo) DCC model, an approach that was developed and refined over more than two decades [14, 52–57]. In its most recent version the framework was extended to $K\Lambda$ photoproduction [58]. Here, we add $K\Sigma$ photoproduction off the proton to the list of analyzed reactions, while the corresponding $K\Sigma$ channel and its pion-induced production were introduced before [14]. We stress that this analysis is currently the only one taking the changed Λ decay parameter α_- [59–61] into account that affects a substantial part of polarization data with KY final states.

Moreover, in Ref. [62] the JüBo formalism was extended to virtual photons (“Jülich-Bonn-Washington” (JBW) approach). A first-ever coupled-channel analysis of pion and eta electroproduction was performed in Ref. [63]. The present extension of JüBo represents a prerequisite for an analysis of $K\Sigma$ electroproduction since the JüBo photoproduction amplitude enters the electroproduction potential as a boundary condition at $Q^2 = 0$. A wealth of electroproduction data for different hadronic final states is already available, including the $K\Sigma$ final state, see, e.g., Ref. [64]. Even more data are expected soon from experiments with the CLAS12 detector at the 12 GeV upgrade of JLab [65].

In Refs. [66, 67] the JüBo framework was applied in a study of heavy meson – heavy baryon reactions with hidden charm.

The paper is organized as follows: in Sec. II we give a short overview of the theoretical foundations of the formalism. Sec. III contains details pertaining the numerical fit and the fit results for $K\Sigma$ photoproduction are presented. In Sec. IV we discuss the extracted resonance spectrum. The appendix includes further selected fit results and the $K\Sigma$ multipole amplitudes.

II. FORMALISM

In this section we outline the basic features of the Jülich-Bonn DCC approach. For further details the reader is referred to Refs. [14, 56, 57].

The (hadronic) meson-baryon interaction is described by the T -matrix $T_{\mu\nu}$ and obeys the Lippmann-Schwinger equation

$$T_{\mu\nu}(q, p', W) = V_{\mu\nu}(q, p', W) + \sum_{\kappa} \int_0^{\infty} dp p^2 V_{\mu\kappa}(q, p, W) G_{\kappa}(p, W) T_{\kappa\nu}(p, p', W), \quad (2.1)$$

where W is the scattering energy in the center-of-mass system, q (p, p') is the modulus of the outgoing (intermediate, incoming) momentum and $G_{\kappa}(p, W)$ the meson-baryon propagator. Eq. (2.1) is formulated in partial-

wave basis (partial-wave indices suppressed) with a maximum total spin of $J = 9/2$. The scattering matrix T with the final and initial channels μ and ν enters the calculation of observables that can then be fit to experiment. The model includes the channels $\kappa = \pi N, \eta N, K\Lambda, K\Sigma, \sigma N, \rho N$ and $\pi\Delta$. The latter three channels account effectively for the three-body $\pi\pi N$ channel. They are included in our model by fitting the corresponding $\pi\pi$ and πN phase shifts [52, 54]. Recently, the channel space was increased by $\pi N \rightarrow \omega N$ [68].

In Eq. (2.1), $V_{\mu\nu}$ stands for the driving transition amplitude from the initial meson-baryon channel ν to the final meson-baryon channel μ . This scattering potential is derived from an effective Lagrangian using time-ordered perturbation theory (TOPT) and is iterated in Eq. (2.1), which automatically ensures two-body unitarity. Two-to-three and three-to-three body unitarity is approximately fulfilled. For a comprehensive discussion, see Ref. [69].

The potential $V_{\mu\nu}$ is constructed of t - and u -channel exchanges of known mesons and baryons, s -channel pole terms that account for genuine resonances and phenomenological contact diagrams, which are included to absorb physics beyond the explicit processes. The role of contact diagrams is discussed in Ref. [58]. Details on the explicit form of $V_{\mu\nu}$ can be found in Refs. [14, 55] and in Appendix Ref. [68]. An important feature of the approach is that the unitarization of Eq. (2.1) allows the dynamical generation of poles without explicit s -channel terms. The decomposition into a pole (s -channel terms) and non-pole part or *background* (t -, u -channels and contact terms) vs. *dressed resonances* is, thus, not unique [53] and we do not attribute any physical meaning to bare masses or couplings that enter the s -channel diagrams. The pole positions and residues of the full amplitude are the only relevant and physically well-defined quantities.

The photon is coupled to the hadronic final-state interaction in the semi-phenomenological approach of Ref. [56] with the electric or magnetic photoproduction multipole amplitude \mathcal{M} given by

$$\mathcal{M}_{\mu\gamma}(q, W) = V_{\mu\gamma}(q, W) + \sum_{\kappa} \int_0^{\infty} dp p^2 T_{\mu\kappa}(q, p, W) G_{\kappa}(p, W) V_{\kappa\gamma}(p, W). \quad (2.2)$$

The index γ stands for the initial γN channel with a real ($Q^2 = 0$) photon, and μ (κ) denotes the final (intermediate) meson-baryon pair. In the present study this channel space is extended to $K\Sigma$ photoproduction, i.e. it now includes also $\mu = K\Sigma$ besides $\pi N, \eta N$ and $K\Lambda$. $T_{\mu\kappa}$ is the hadronic half-off-shell matrix of Eq. (2.1) with the off-shell momentum p and the on-shell momentum q , and $V_{\mu\gamma}$ stands for the driving photoproduction amplitude. As in Eq. (2.1), G_{κ} denotes the meson-baryon two-body propagator with $\kappa = \pi N, \eta N, K\Lambda, K\Sigma$ and $\pi\Delta$. As we do not yet analyze $\pi\pi N$ photoproduction reactions, we only allow for photoexcitation of the $\pi\Delta$ state

out of the three effective $\pi\pi N$ states. Equation (2.2) can be straightforwardly extended to virtual photons, i.e. to electroproduction processes, as done in Refs. [62, 63].

The driving photoproduction potential $V_{\mu\gamma}$ in Eq. (2.2) is written as

$$V_{\mu\gamma}(p, W) = \alpha_{\mu\gamma}^{NP}(p, W) + \sum_i \frac{\gamma_{\mu;i}^a(p) \gamma_{\gamma;i}(W)}{W - m_i^b}. \quad (2.3)$$

where $\gamma_{\mu;i}^a$ denotes the (real) meson-baryon-resonance vertex function and $\gamma_{\gamma;i}$ the resonance-photon-baryon vertex function. The summation runs over the number of resonances per partial wave, specified by the index i . While the hadronic vertex function $\gamma_{\mu;i}^a$ is precisely the same as that employed in the field-theoretical description of the hadronic reactions in Eq. (2.1), the photon vertex $\gamma_{\gamma;i}$ is parameterized phenomenologically as a polynomial function in energy W of the system and includes free parameters for each genuine s -channel state to be determined by a fit to the data. The non-pole part in Eq. (2.3), $\alpha_{\mu\gamma}^{NP}$, is also parameterized by energy-dependent polynomials with additional fit parameters depending on the partial wave and the hadronic final state. This polynomial parameterization is of numerical advantage as the evaluation of the amplitude is much faster than in a field-theoretical description as, e.g., in Ref. [70]. The explicit forms of $\gamma_{\gamma;i}$ and $\alpha_{\mu\gamma}^{NP}$ are given in Ref. [56].

III. RESULTS

A. Data base

The data analyzed in the present study are listed in Tab. I. A substantial part of the data sets was obtained from the GWU/SAID [71] and BnGa webpages [72]. A full list of references to data sets for reactions other than $\gamma p \rightarrow K\Sigma$ is provided in supplementary material online [73]. Note that first measurements of $K^+\Sigma^-$ and $K^0\Sigma^0$ final states produced on quasifree neutrons begin to emerge [74–76] that will be analyzed in the future.

In total, the data base for $K^+\Sigma^0$ photoproduction comprises more than 10 times the number of data points of $K^0\Sigma^+$. An increase in the amount of data and in the availability of different polarization observables for the latter channel is urgently called for to disentangle the isospin content in the $K\Sigma$ channel. Especially since the quantity and quality of the data base for pion-induced $K\Sigma$ production is not comparable to the photoproduction measurements, see Refs. [14, 55] for a representation of the former.

For $\gamma p \rightarrow K^+\Sigma^0$, we do not fit the SAPHIR differential cross section data from Refs. [77–79] due to inconsistencies at backward angles with more recent data sets. See the discussion in Ref. [80], where those inconsistencies are attributed to possible overall normalization issues. Data for the recoil polarization P from SAPHIR are, however, included in our fit, except for Ref. [78]. Moreover, differential cross sections at forward angles of older data sets

between $W = 1680$ MeV and 2000 MeV are not taken into account. To avoid inconsistencies, we fit instead the very recent measurement from the BGOOD experiment at ELSA [81]. The BGOOD data on $d\sigma/d\Omega$ and P at forward angles for $K^+\Lambda$ photoproduction [82] are also included. Compared to the JüBo2017 analysis [58], a number of recent data sets were additionally included in the fit, such as new data in ηp photoproduction for the beam asymmetry Σ [83] and T , E , P , H , and G [46] by the CBELSA/TAPS Collaboration.

The BES-III Collaboration recently reported on a new value for the weak decay parameter α_- of the Λ baryon [59, 61]. This parameter is a crucial quantity in the extraction process of polarization observables for $K^+\Lambda$, but also for $K^+\Sigma^0$ photoproduction, since the decay chain $K^+\Sigma^0 \rightarrow K^+\gamma\Lambda \rightarrow K^+\gamma p\pi^-$ is utilized in the experiments. That the new value of α_- is significantly larger than the previous PDG value of $\alpha_- = 0.642(13)$, was confirmed in a re-analysis of CLAS $K^+\Lambda$ photoproduction data in Ref. [60] where a value of $\alpha_- = 0.721(6)(5)$ was obtained. This implies that all polarization observables affected by α_- , i.e. P , T , $C_{x,z}$ and $O_{x,z}$, are actually about 17 % smaller. Accordingly, we scale all affected polarization data in $\gamma p \rightarrow K^+\Lambda$, $K^+\Sigma^0$, but also in $\pi^- p \rightarrow K^0\Lambda$, $K^0\Sigma^0$ by a factor of $0.642/0.721$. The present analysis is currently the only taking this change into account. Analytic expressions of the observables in terms of partial waves, CGNL amplitudes and multipoles are given in Refs. [56, 58].

B. Numerical details and fit parameters

The free parameters of the approach are adjusted to the experimental data in a χ^2 minimization using MINUIT on the supercomputer JURECA-DC at the Jülich Supercomputing Center [105]. In the current study we consider partial waves of a total spin up to $J = 9/2$ and the following types of parameters were fitted:

s -channel or “pole parameters”: one bare mass and several coupling constants to the different hadronic channels (πN , ρN , ηN , $\pi\Delta$, $K\Lambda$, $K\Sigma$) as allowed by isospin for each of the 12 genuine isospin $I = 1/2$ poles and the 10 $I = 3/2$ poles amount to 134 fit parameters. Note that the nucleon is included in the JüBo approach as an s -channel state in the P_{11} partial wave. Its bare mass and coupling to the πN channel are renormalized as described in Ref. [57] to match the physical values of $W = m_N = 938$ MeV and $f_{\pi NN} = 0.964$ [106]. The cut-off parameter in the form factor of the nucleon s -channel diagram is treated as a free parameter.

phenomenological contact term parameters: we include one contact term in each partial wave with couplings to πN , ηN , $K\Lambda$ and $K\Sigma$. In case of the P_{13} partial wave, the contact term also couples to the $\pi\Delta$ channel. This amounts to 61 fit parameters.

t -, u -channel or “background parameters”: while almost all coupling constants for these diagrams are fixed

TABLE I. Data included in the fit. A full list of references to the different experimental publications can be found online [73].

Reaction	Observables (# data points)	# data p./channel
$\pi N \rightarrow \pi N$	PWA GW-SAID WI08 [84] (ED solution)	3,760
$\pi^- p \rightarrow \eta n$	$d\sigma/d\Omega$ (676), P (79)	755
$\pi^- p \rightarrow K^0 \Lambda$	$d\sigma/d\Omega$ (814), P (472), β (72)	1,358
$\pi^- p \rightarrow K^0 \Sigma^0$	$d\sigma/d\Omega$ (470), P (120)	590
$\pi^- p \rightarrow K^+ \Sigma^-$	$d\sigma/d\Omega$ (150)	150
$\pi^+ p \rightarrow K^+ \Sigma^+$	$d\sigma/d\Omega$ (1124), P (551), β (7)	1,682
$\gamma p \rightarrow \pi^0 p$	$d\sigma/d\Omega$ (18721), Σ (3287), P (768), T (1404), $\Delta\sigma_{31}$ (140), G (393), H (225), E (1227), F (397), C_{x_L} (74), C_{z_L} (26)	26,662
$\gamma p \rightarrow \pi^+ n$	$d\sigma/d\Omega$ (5670), Σ (1456), P (265), T (718), $\Delta\sigma_{31}$ (231), G (86), H (128), E (903)	9,457
$\gamma p \rightarrow \eta p$	$d\sigma/d\Omega$ (9112), Σ (535), P (63), T (291), F (144), E (306), G (47), H (56)	10,554
$\gamma p \rightarrow K^+ \Lambda$	$d\sigma/d\Omega$ (2563), P (1663), Σ (459), T (383), $C_{x'}$ (121), $C_{z'}$ (123), $O_{x'}$ (66), $O_{z'}$ (66), O_x (314), O_z (314),	6,072
$\gamma p \rightarrow K^+ \Sigma^0$	$d\sigma/d\Omega$ (4381) [80, 85–94], P (402) [77, 79, 80, 90, 92, 93, 95], Σ (280) [95–97] T (127) [97], $C_{x'}$ (94) [98], $C_{z'}$ (94) [98], O_x (127) [97], O_z (127) [97]	5,652
$\gamma p \rightarrow K^0 \Sigma^+$	$d\sigma/d\Omega$ (281) [76, 99–102], P (167) [100, 102–104]	448
	in total	67,120

from SU(3) flavour symmetry, the cut-off values in the corresponding form factors are treated as free parameters of the model. Our framework comprises 68 fit parameters of this type. The numerical evaluation of the background terms is much more time-consuming than for the other building blocks of the amplitude and we therefore refrained from an in-depth re-fit of the parameters connected to them. However, due to a recent change in sign convention for a smaller number of exchange diagrams [68], the background parameters were also slightly re-adjusted.

“photo parameters”: the parameters directly related to the photoproduction kernel are the couplings in the energy-dependent polynomials that are used to parameterize $V_{\mu\gamma}$ as described below Eq.(2.3). In the current study, polynomials of order 4 or less are sufficient to achieve a good description of the data. We have 764 fit parameters of this type. Note that the photoproduction amplitude also depends on the “pole”, contact term, and “background” parameters via the hadronic final state interaction in Eqs. (2.2) and (2.3).

The numerical evaluation of a model as complex as the present one is not straightforward and while all data are fitted simultaneously, not all parameters can be adjusted in the same run. Moreover, not all free parameters are indispensable from a physical point of view. This applies especially to the “photo parameters” in the polynomial parameterization. But also the number of genuine s -channel states is not predetermined by symmetry constraints or the like. A systematic study regarding those points using model selection tools such as the LASSO method to reduce the number of parameters [107] and/or minimize the resonance content [108] are planned for the future. On the other hand, the large number of fit parameters connected to the polynomial parameterization can also be regarded as an advantage since it prevents the inclusion of superfluous s -channel states to improve the fit result.

If provided, experimental systematic errors of more recent measurements are taken into account as angle-independent normalization factors, following the SAID approach (see, e.g., Ref. [109]), i.e. they are not added in

quadrature to the statistical ones because systematic errors cannot necessarily be considered as Gaussian and induce correlations between data. However, for older data sets we add a general 5 % uncertainty to the statistical ones to account for unspecified systematic errors.

The amount of available data points varies significantly for the different reaction channels and observables, c.f. Tab. I. We therefore apply weighting factors to the different data sets in the χ^2 minimization in order to achieve a good description also of those sets the fit would otherwise ignore due to the limited number of data points. Such a weighting procedure is standard in the field for this type of analyses [45] and inevitable in situations as in $K\Sigma$ photoproduction where much more data are available for one of the two possible isospin channels. The weights applied for $\gamma p \rightarrow K^+\Sigma^0$, $K^0\Sigma^+$ in the present study can be found in Tab. VI in Appendix C.

C. Uncertainty estimation

A rigorous statistical error analysis of the extracted baryon spectrum would include the study of the propagation of statistical and systematic uncertainties from experimental data to the resonance parameters, as well as an application of model selection tools. For the elastic πN channel, it would also require the transition from fitting mere partial-wave amplitudes to including the covariance matrices and performing a correlated χ^2 fit [109]. Such an analysis is beyond the scope of the present study and has, so far, never been fully carried out in any analysis efforts in the field.

Instead, we estimate the uncertainties of the resonance parameters from re-fits with modified model parameterization, where the difference lies in the number of s -channel states. For each partial wave with only one s -channel resonance, a second genuine state is included and an extensive re-fit of all “pole”, contact term, and “photo parameters” is performed. This amounts to 16 re-fits. The uncertainties for the resonance parameters quoted in Tabs III to V denote the maximal deviation of the original resonance values from the ones extracted from the re-fits. In none of the re-fits the data description is significantly improved compared to the original fit. We thus conclude that our original set of s -channel states is sufficient.

This procedure represents a qualitative estimation of uncertainties from statistical and systematic sources and allows to determine the relative size of uncertainty among the different resonances. The absolute size of the errors, however, is not well determined. We still regard this as a valuable compromise since a rigorous error analysis is not feasible in the current work. In this context, the electroproduction fits of Refs. [62, 63] were carried out with up to eight radically different fit strategies and parameter starting points, leading to a better exploration of different local minima in parameter space. Our current effort to estimate uncertainties goes in the same direc-

tion, but the data base in this study is much larger and more heterogeneous. In any case, it is clear that systematic uncertainties and amplitude ambiguities dominate the error bars of any extracted quantity.

D. Fit results

In Figs. 1 to 8 selected fit results for the reactions $\gamma p \rightarrow K^+\Sigma^0$ and $K^0\Sigma^+$ are shown. Fit results for other pion- and photon-induced reactions can be found online [73]. The χ^2 values for the $\gamma p \rightarrow K\Sigma$ channels obtained in the current fit are given in Tab. II. These numbers were obtained with all weights set to one (cf. Appendix C).

For $\gamma p \rightarrow K^+\Sigma^0$ we achieve an overall good fit result of the data. Exceptions are, to a certain extend, the beam-recoil observables $C_{x'}$ and $C_{z'}$ in Fig. 6, where the fit fails to give a very accurate description of the data. Regarding the large uncertainties of the data and a number of points with unphysical values larger than one, we consider major modifications of the model, such as the inclusion of new genuine s -channel resonances, unjustified if they are just based on $C_{x'}$ and $C_{z'}$ alone, at least without an in-depth statistical analysis, which is beyond the scope of the present study.

Due to the limited data base it is much harder to achieve a good description of the $K^0\Sigma^+$ data. Moreover, the available data are not entirely consistent as can be seen in Fig. 7. Accordingly, the χ^2 is worse than for $K^+\Sigma^0$. More data, especially for polarization observables would be helpful to better determine the amplitude for the $K^0\Sigma^+$ channel.

The extracted multipole amplitudes for $\gamma p \rightarrow K^+\Sigma^0$ and $K^0\Sigma^+$ can be found in Appendix A. One of the striking features of the $K\Sigma$ photoproduction data is the appearance of relatively sharp drops in cross section of both charge final states, especially for $K^+\Sigma^0$ [81]. This issue is discussed in the next section.

IV. RESONANCE SPECTRUM

As required for a reliable determination of the resonance spectrum, in the present approach a resonance state is defined in terms of a pole in the complex energy plane on the unphysical, second Riemann sheet of the full scattering matrix $T_{\mu\nu}$. In Ref. [54] the analytic properties, the sheet structure and cuts of our model are described in detail as well as the analytic continuation of the amplitude to the second sheet. The latter is achieved by a contour deformation of the momentum integration; see Ref. [111] for an updated and simplified discussion. The relevance of including complex branch points for channels with unstable particles ($\pi\Delta$, ρN and σN in the present case) in order to avoid a false resonance signal, is further discussed in Ref. [112].

The coupling strength of the individual states to the different hadronic channels is parameterized by the *nor-*

TABLE II. The χ^2 for the reactions $\gamma p \rightarrow K^+\Sigma^0$ and $K^0\Sigma^+$.

Reaction	Observable (# data points)	$\chi^2/\text{data point}$
$\gamma p \rightarrow K^+\Sigma^0$	$d\sigma/d\Omega$ (4381)	1.52
	P (422)	2.60
	Σ (280)	1.88
	T (127)	1.50
	$C_{x'}$ (94)	3.11
	$C_{z'}$ (94)	2.65
	O_x (127)	1.87
	O_z (127)	1.39
	in total	1.66
$\gamma p \rightarrow K^0\Sigma^+$	$d\sigma/d\Omega$ (281)	3.53
	P (167)	2.54
	in total	3.16

malized residues. Our definition of this quantity is in agreement with that of the Particle Data Group [13] and can be found in Ref. [14]. In the present study, we apply the method described in the appendix of Ref. [55] to calculate the residues of the complex poles. Following the PDG convention, the coupling of the γN channel to the resonances is defined by the so-called *photocouplings at the pole*. See Ref. [56] for an explicit definition and its decomposition into electric and magnetic multipoles. Note that those photocouplings at the pole are independent of the hadronic final state.

In Tabs. III and IV we list the pole positions and residues of established states found in the present study. The corresponding photocouplings at the pole are given in Tab. V. We compare the present results to the JüBo2017 analysis [58], where $K\Lambda$ but not $K\Sigma$ photoproduction was already included, besides the other channels listed in Tab. I. We also give the estimates of resonance properties by the Particle Data Group [13] in a shortened form. For example, the expression for the real part of the pole position of the $N(1680)5/2^+$, “1665 to 1680 (≈ 1675) OUR ESTIMATE”, is quoted as “ 1675_{-10}^{+5} ”. In cases where the PDG does not provide an estimate, i.e. for states with less than three stars, we average the entries from “above the line” to have a point of comparison. The PDG values for the normalized residues of inelastic channels all originate from studies of the Bonn-Gatchina group [45, 113].

We find all 4-star $I = 1/2$ and $3/2$ resonances with $J \leq 9/2$ except for the $N(1895)1/2^+$, which is not needed in

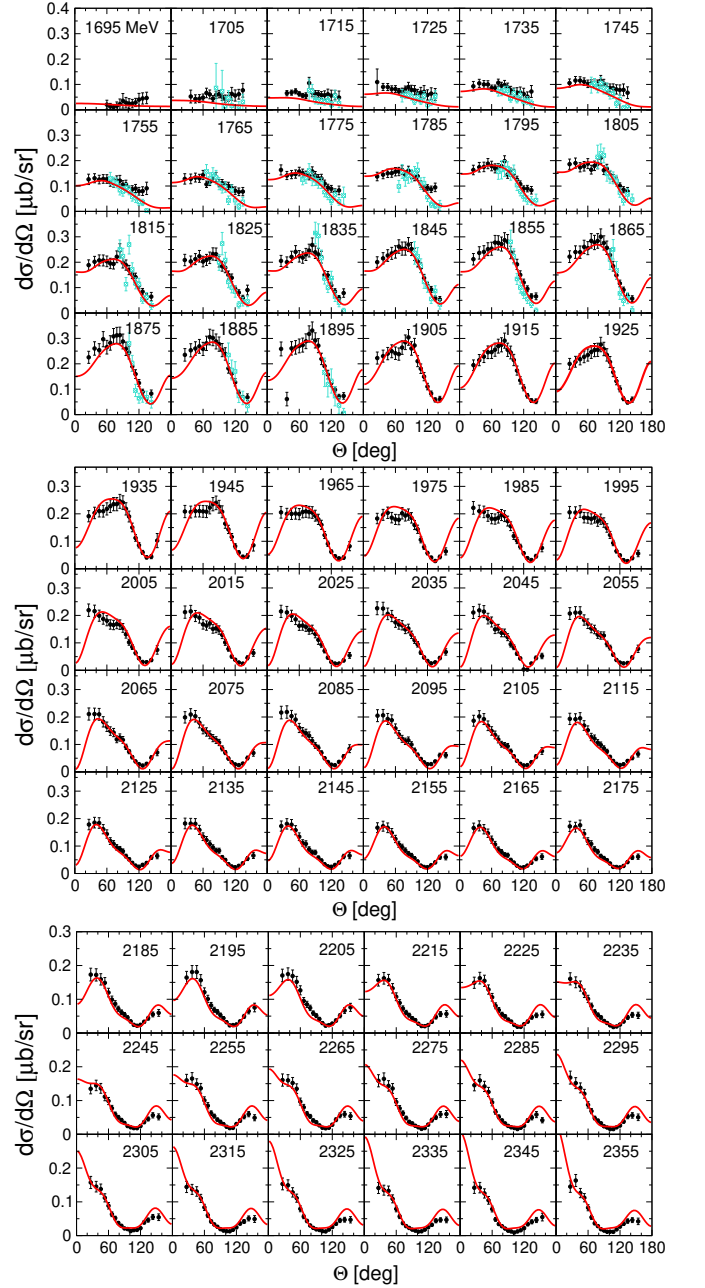


FIG. 1. Selected fit results (solid (red) lines) for the differential cross section of the reaction $\gamma p \rightarrow K^+\Sigma^0$. Data: (black) circles: CLAS (Dey *et al.* [80]); (cyan) squares: MAMI (Jude *et al.* [94]). The numbers in the individual panels in this and all subsequent figures denote the scattering energy W in the center-of-mass system in MeV.

the present study to achieve a good fit result. A number of states rated with less than 4 stars are also observed. In addition to the resonances in Tabs. III and IV, we see indications for other states that are not listed in the tables since further evidence for their existence is needed. Those states and the properties of selected resonances are discussed in the following.

TABLE III. Properties of the $I = 1/2$ resonances: Pole positions W_0 (Γ_{tot} defined as $-2\text{Im}W_0$), elastic πN residues ($|r_{\pi N}|, \theta_{\pi N \rightarrow \pi N}$), and the normalized residues ($\sqrt{\Gamma_{\pi N} \Gamma_{\mu}}/\Gamma_{\text{tot}}, \theta_{\pi N \rightarrow \mu}$) of the inelastic reactions $\pi N \rightarrow \mu$ with $\mu = \eta N, K\Lambda, K\Sigma$. Resonances with italic numbers in the parentheses are not identified with a PDG state; subscript (a): dynamically generated in the present study. We show the results of the present study JüBo2022 (“2022”) and for comparison the results of the JüBo2017 analysis [58] (“2017”) and the estimates of and from the Particle Data Group [13] (“PDG”), if available, as well as the PDG star rating. See text for further explanations regarding states not listed here.

fit		Re W_0	$-2\text{Im } W_0$	$ r_{\pi N} $	$\theta_{\pi N \rightarrow \pi N}$	$\frac{\Gamma_{\pi N}^{1/2} \Gamma_{\eta N}^{1/2}}{\Gamma_{\text{tot}}}$	$\theta_{\pi N \rightarrow \eta N}$	$\frac{\Gamma_{\pi N}^{1/2} \Gamma_{K\Lambda}^{1/2}}{\Gamma_{\text{tot}}}$	$\theta_{\pi N \rightarrow K\Lambda}$	$\frac{\Gamma_{\pi N}^{1/2} \Gamma_{K\Sigma}^{1/2}}{\Gamma_{\text{tot}}}$	$\theta_{\pi N \rightarrow K\Sigma}$
		[MeV]	[MeV]	[MeV]	[deg]	[%]	[deg]	[%]	[deg]	[%]	[deg]
$N(1535) \ 1/2^-$	2022	1504(0)	74 (1)	18 (1)	$-37(3)$	50(3)	118(3)	26(2)	$-67(3)$	28(2)	92(3)
	2017	1495(2)	112(1)	23(1)	$-52(4)$	51(1)	105(3)	6.0(1.5)	$-44(30)$	5.7(1.6)	$-86(6)$
	PDG	1510 ± 10	130 ± 20	25 ± 10	-15 ± 15	43 ± 3	-76 ± 5	—	—	—	—
$N(1650) \ 1/2^-$	2022	1678(3)	127(3)	59(21)	$-18(46)$	34(12)	71(45)	26(10)	$-40(46)$	41(15)	$-21(47)$
	2017	1674(3)	130(9)	29(4)	$-53(7)$	18(3)	28(5)	17(1)	$-59(3)$	21(2)	$-67(4)$
	PDG	1655 ± 15	135 ± 35	45^{+10}_{-20}	-70^{+20}_{-10}	29 ± 3	134 ± 10	—	—	—	—
$N(1440) \ 1/2^+_{(a)}$	2022	1353(1)	203(3)	59(2)	$-104(4)$	8.4(0.4)	$-28(4)$	2.5(0.9)	$-92(86)$	0.2(0.5)	$-32(154)$
	2017	1353(4)	213(2)	62(2)	$-100(7)$	8.6(0.9)	$-29(7)$	4.8(0.4)	129(6)	2.1(0.4)	87(22)
	PDG	1370 ± 10	175 ± 15	50 ± 4	-90 ± 10	—	—	—	—	—	—
$N(1710) \ 1/2^+_{(a)}$	2022	1605(14)	115(9)	5.5(4.7)	$-114(57)$	28(26)	91(63)	20(19)	$-144(77)$	5.5(4.8)	162(305)
	2017	1731(7)	157(6)	1.5(0.1)	178(9)	1.6(0.4)	$-137(46)$	10(1)	52(5)	1.4(0.1)	$-79(24)$
	PDG	1700 ± 20	120 ± 40	7 ± 3	190 ± 70	12 ± 4	0 ± 45	—	—	—	—
$N(1750) \ 1/2^+_{(a)}$	2022	not seen									
	2017	1750(2)	318(3)	2.9(2.8)	100(29)	0.7(0.5)	$-31(30)$	1.0(0.2)	164(19)	3.2(0.6)	29(15)
$N(1720) \ 3/2^+$	2022	1726(8)	185(12)	15(4)	$-60(5)$	4.9(0.9)	64(10)	3.4(0.4)	$-101(8)$	5.9(1)	82(6)
	2017	1689(4)	191(3)	2.3(1.5)	$-57(22)$	0.3(0.2)	139(35)	1.5(0.9)	$-66(30)$	0.6(0.4)	26(58)
	PDG	1675 ± 15	250^{+150}_{-100}	15^{+10}_{-5}	-130 ± 30	3 ± 2	—	6 ± 4	-150 ± 45	—	—
$N(1900) \ 3/2^+$	2022	1905(3)	93(4)	1.6(2.7)	44(21)	1.0(0.3)	55(29)	2.9(0.6)	5.4(18.6)	1.3(0.3)	$-40(18)$
	2017	1923(2)	217(23)	1.6(1.2)	$-61(121)$	1.1(0.7)	$-10(79)$	2.1(1.4)	1.7(86)	10(7)	$-34(74)$
	PDG	1920 ± 20	150 ± 50	4 ± 2	-20 ± 30	5 ± 2	70 ± 60	3 ± 2	90 ± 40	4 ± 2	110 ± 30
$N(1520) \ 3/2^-$	2022	1482(6)	126(18)	27(21)	$-36(48)$	2.1(1.8)	34(53)	2.6(1.9)	127(47)	1.0(1.2)	94(68)
	2017	1509(5)	98(3)	33(6)	$-16(23)$	3.7(0.6)	85(18)	0.8(0.3)	83(43)	3.0(1.0)	$-28(21)$
	PDG	1510 ± 5	110^{+10}_{-5}	35 ± 3	-10 ± 5	—	—	—	—	—	—
$N(1675) \ 5/2^-$	2022	1652(3)	119(1)	22(1)	$-17(2)$	6.3(0.9)	$-39(2)$	$< 0.1(0.2)$	174(161)	2.4(0.2)	$-166(5)$
	2017	1647(8)	135(9)	28(2)	$-22(3)$	9.1(1.8)	$-45(3)$	0.7(0.2)	$-91(6)$	2.3(0.2)	$-175(10)$
	PDG	1660 ± 5	135^{+15}_{-10}	28 ± 5	-25 ± 5	—	—	—	—	—	—
$N(1680) \ 5/2^+$	2022	1657(3)	120(2)	36(1)	$-31(1)$	0.6(0.7)	118(2)	0.6(0.1)	$-119(3)$	$< 0.1(0.2)$	$-46(29)$
	2017	1666(4)	81(2)	29(1)	$-12(1)$	1.7(0.5)	145(1)	0.9(0.1)	$-77(2)$	< 0.1	$-33(161)$
	PDG	1675^{+5}_{-10}	120^{+15}_{-10}	40 ± 5	-5 ± 15	—	—	—	—	—	—
$N(1990) \ 7/2^+$	2022	1861(9)	72(5)	0.16(0.01)	$-119(4)$	4.8(0.2)	$-43(4)$	0.4(0.1)	133(4)	1.0(0.3)	$-54(4)$
	2017	2152(12)	225(20)	0.2(0)	92(10)	0.4(0.2)	$-9.1(5.5)$	1.4(0.3)	$-13(5)$	1.5(0.3)	$-18(6)$
	PDG	1965 ± 80	250 ± 60	—	—	—	—	—	—	—	—
$N(2190) \ 7/2^-$	2022	1965(12)	287(66)	18(7)	$-45(27)$	2.1(1)	$-65(29)$	2.6(1.4)	$-78(30)$	0.5(0.2)	$-92(31)$
	2017	2084(7)	281(6)	20(2)	$-31(1)$	1.2(0.6)	140(1)	3.7(0.3)	$-47(1)$	0.3(1.1)	124(2)
	PDG	2100 ± 50	400 ± 100	50^{+20}_{-25}	0^{+30}_{-30}	—	—	3 ± 1	20 ± 15	—	—
$N(2250) \ 9/2^-$	2022	2095(20)	422(26)	14(2)	$-67(17)$	1.8(0.2)	$-89(9)$	0.3(0.1)	80(9)	0.4(0.4)	$-111(9)$
	2017	1910(53)	243(73)	0.4(0.1)	$-56(25)$	0.9(0.2)	$-80(21)$	< 0.1	$-96(21)$	0.2(0.2)	$-110(19)$
	PDG	2200 ± 50	420^{+80}_{-70}	25 ± 5	-40 ± 20	—	—	—	—	—	—
$N(2220) \ 9/2^+$	2022	2131(12)	388(12)	48(10)	$-13(3)$	4.2(1.1)	$-48(4)$	2.0(0.5)	$-60(4)$	0.3(1.6)	$-70(4)$
	2017	2207(89)	659(140)	91(47)	$-68(16)$	0.3(0.4)	$-109(17)$	< 0.1	31(150)	1.0(0.9)	44(19)
	PDG	2170^{+30}_{-40}	400^{+80}_{-40}	45^{+15}_{-10}	-50^{+20}_{-10}	—	—	—	—	—	—

TABLE IV. Properties of the $I = 3/2$ resonances: Pole positions W_0 (Γ_{tot} defined as $-2\text{Im}W_0$), elastic πN residues ($|r_{\pi N}|, \theta_{\pi N \rightarrow \pi N}$), and the normalized residues ($\sqrt{\Gamma_{\pi N} \Gamma_{\mu}}/\Gamma_{\text{tot}}, \theta_{\pi N \rightarrow \mu}$) of the inelastic reactions $\pi N \rightarrow K\Sigma$ and $\pi N \rightarrow \pi\Delta$ with the number in brackets indicating L of the $\pi\Delta$ state. Subscript (a): dynamically generated in the present study. We show the results of the present study JüBo2022 (“2022”) and for comparison the results of the JüBo2017 analysis [58] (“2017”) and the estimates of and from the Particle Data Group [13] (“PDG”), if available, as well as the PDG star rating. See text for further explanations regarding states not listed here.

		Pole position		πN Residue		$K\Sigma$ channel		$\pi\Delta$, channel (6)		$\pi\Delta$, channel (7)	
		Re W_0 [MeV]	$-2\text{Im} W_0$ [MeV]	$ r_{\pi N} $ [MeV]	$\theta_{\pi N \rightarrow \pi N}$ [deg]	$\frac{\Gamma_{\pi N}^{1/2} \Gamma_{K\Sigma}^{1/2}}{\Gamma_{\text{tot}}}$ [%]	$\theta_{\pi N \rightarrow K\Sigma}$ [deg]	$\frac{\Gamma_{\pi N}^{1/2} \Gamma_{\pi\Delta}^{1/2}}{\Gamma_{\text{tot}}}$ [%]	$\theta_{\pi N \rightarrow \pi\Delta}$ [deg]	$\frac{\Gamma_{\pi N}^{1/2} \Gamma_{\pi\Delta}^{1/2}}{\Gamma_{\text{tot}}}$ [%]	$\theta_{\pi N \rightarrow \pi\Delta}$ [deg]
	fit										
$\Delta(1620) 1/2^-$	2022	1607(4)	85(5)	12(2)	126(4)	11(2)	-120(5)	—	—	32(2) (D)	81(2)
	2017	1601(4)	66(7)	16(3)	-106(3)	31(6)	-103(2)	—	—	57(4) (D)	103(1)
****	PDG	1600 ± 10	120 ± 20	17_{-2}^{+3}	-100 ± 20	—	—	—	—	42 ± 6	-90 ± 20
$\Delta(1910) 1/2^+$	2022	1802(11)	550(22)	35(25)	93(14)	0.2(0.4)	138(19)	24(18) (P)	-42(14)	—	—
	2017	1798(5)	621(35)	81(68)	-87(18)	5.1(2.2)	-96(58)	53(42) (P)	126(15)	—	—
****	PDG	1860 ± 30	300 ± 100	25 ± 5	130 ± 50	7 ± 2	-110 ± 30	24 ± 10	85 ± 35	—	—
$\Delta(1232) 3/2^+$	2022	1215(2)	93(1)	50(2)	-39(1)						
	2017	1215(4)	97(2)	48(1)	-40(2)						
****	PDG	1210 ± 1	100 ± 2	50_{-1}^{+2}	-46_{-2}^{+1}						
$\Delta(1600) 3/2^+$	2022	1590(1)	136(1)	11(1)	-106(2)	14(1)	14(2)	30(3) (P)	87(3)	0.4(0.04) (F)	-62(9)
	2017	1579(17)	180(30)	11(6)	-162(41)	13(7)	-21(40)	31(16) (P)	37(40)	0.6(0.9) (F)	-56(117)
****	PDG	1510 ± 50	270 ± 70	25 ± 15	180 ± 30	—	—	15 ± 4	30 ± 35	1 ± 0.5	—
$\Delta(1920) 3/2_{(a)}^+$	2022	1883(4)	844(10)	41(5)	11(7)	20(2)	104(4)	5.7(0.5) (P)	-48(5)	2.0(0.3) (F)	147(7)
	2017	1939(141)	838(38)	26(9)	96(35)	14(3)	146(18)	2.7(1.0) (P)	31(16)	0.6(0.4) (F)	-115(86)
***	PDG	1900 ± 50	300 ± 100	16 ± 8	-100 ± 50	9 ± 3	80 ± 40	20 ± 8	-105 ± 25	37 ± 10	-90 ± 20
$\Delta(1700) 3/2^-$	2022	1637(64)	295(58)	15(23)	-13(147)	0.7(1.5)	-176(320)	3.8(7.8) (D)	127(254)	20(29) (S)	146(266)
	2017	1667(28)	305(45)	22(6)	-8.6(32.1)	0.7(1.8)	176(152)	4.8(2.0) (D)	169(26)	38(14) (S)	146(30)
****	PDG	1665 ± 25	250 ± 50	25 ± 15	-20 ± 20	—	—	12 ± 6	-160 ± 30	25 ± 12	135 ± 45
$\Delta(1930) 5/2^-$	2022	1821(4)	447(13)	15(3)	-108(9)	1.0(0.2)	49(9)	12(3) (D)	64(7)	0.8(0.2) (G)	148(4)
	2017	1663(43)	263(76)	5.1(2.4)	-112(23)	2.5(0.9)	-27(18)	17(5) (D)	68(17)	0.2(0.2) (G)	-134(48)
***	PDG	1880 ± 40	280 ± 50	14 ± 6	-30_{-10}^{+20}	—	—	—	—	—	—
$\Delta(1905) 5/2^+$	2022	1707(1)	127(8)	3.7(1.0)	-92(12)	0.2(0.03)	154(11)	1.7(0.3) (F)	18(15)	10(1) (P)	-109(14)
	2017	1733(47)	435(264)	21(20)	110(93)	0.5(0.5)	-4.3(345)	3.6(3.4) (F)	-117(309)	15(15) (P)	-61(230)
****	PDG	1800 ± 30	300 ± 40	20 ± 5	-50_{-70}^{+20}	—	—	—	—	19 ± 7	10 ± 30
$\Delta(1950) 7/2^+$	2022	1875(1)	166(3)	27(2)	1.1(2.0)	2.0(0.3)	-40(7)	30(54) (F)	166(2)	5.1(0.7) (H)	-11(2)
	2017	1850(37)	259(61)	34(20)	-48(46)	1.4(1.4)	-106(50)	35(25) (F)	119(46)	1.7(1.0) (H)	-103(59)
****	PDG	1880 ± 10	240 ± 20	52 ± 8	-32 ± 8	5 ± 1	-65 ± 25	12 ± 4	—	—	—
$\Delta(2200) 7/2^-$	2022	1963(2)	328(3)	6.8(0.6)	-80(2)	$< 0.1(0.03)$	-123(2)	0.3(0.1) (G)	152(5)	16(1) (D)	100(2)
	2017	2290(132)	388(204)	33(92)	-32(138)	1.0(1.0)	118(165)	7.0(21.1) (G)	-103(328)	53(124) (D)	137(132)
***	PDG	2100 ± 50	340 ± 80	8 ± 3	-70 ± 40	—	—	—	—	—	—
$\Delta(2400) 9/2^-$	2022	2458(3)	280(2)	5.4(5)	8.4(33)	0.4(0.6)	17(30)	10(11)(G)	17(23)	1.9(0.5) (I)	-120(49)
	2017	1783(86)	244(194)	7.2(8.6)	-78(30)	0.5(0.6)	9.1(9.0)	19(9) (G)	-95(36)	1.6(1.0) (I)	-18(90)
**	PDG	2260 ± 60	320 ± 160	8 ± 4	-25 ± 15	—	—	—	—	—	—

A. Discussion of specific resonances

In the S_{11} partial wave two bare s -channel poles are included which correspond to the $N(1535)1/2^-$ and the $N(1650)1/2^-$. The $N(1535)1/2^-$ is narrower than in previous JüBo studies [57, 58]. Note that in an earlier SAID

solution [12] this resonance was also found to be rather narrow ($\Gamma = 95$ MeV) but the width varies in different analyses [13]. The pole position of the $N(1650)1/2^-$, on the other hand, is only slightly different from our previous analysis [58] and very close to the PDG values. The residues are less stable in general. While the coupling of

TABLE V. Properties of the $I = 1/2$ (left) and $I = 3/2$ resonances (right): photocouplings at the pole ($A_{\text{pole}}^h, \vartheta^h$). Subscript (a): dynamically generated in the present study. We show the results of the present study JüBo2022 (“2022”) and for comparison the results of fit B of the JüBo2017 analysis [58] (“2017”). The uncertainties quoted in parentheses provide a rather rough estimate as explained in the text.

	$\mathbf{A}_{\text{pole}}^{1/2}$		$\vartheta^{1/2}$	$\mathbf{A}_{\text{pole}}^{3/2}$		$\vartheta^{3/2}$	
	$[10^{-3} \text{ GeV}^{-1/2}]$	[deg]		$[10^{-3} \text{ GeV}^{-1/2}]$	[deg]		
fit				fit			
$N(1535) \ 1/2^-$	2022	84(5)	$-12(3)$	$\Delta(1620) \ 1/2^-$	2022	11(4)	$57(24)$
	2017	106(3)	$-1.6(2.1)$		2017	19(9)	$15(7)$
$N(1650) \ 1/2^-$	2022	39(10)	$-0.2(27)$	$\Delta(1910) \ 1/2^+$	2022	$-446(72)$	$-70(21)$
	2017	51(3)	$-1.4(3.9)$		2017	$-238(149)$	$-87(35)$
$N(1440) \ 1/2^+_{(a)}$	2022	$-90(13)$	$-30(5)$	$\Delta(1232) \ 3/2^+$	2022	$-126(4)$	$-18(3)$
	2017	$-90(13)$	$-33(18)$		2017	$-120(5)$	$-14(3)$
$N(1710) \ 1/2^+_{(a)}$	2022	$-18(19)$	$40(109)$	$\Delta(1600) \ 3/2^+$	2022	25(10)	$0.5(5.9)$
	2017	$-14(2)$	$-23(188)$		2017	54(25)	$144(31)$
$N(1720) \ 3/2^+$	2022	39(7)	$60(10)$	$\Delta(1920) \ 3/2^+_{(a)}$	2022	138(12)	$-8.9(3.9)$
	2017	48(24)	$30(24)$		2017	35(15)	$-89(44)$
$N(1900) \ 3/2^+$	2022	$9.1(2.7)$	$80(23)$	$\Delta(1700) \ 3/2^-$	2022	163(20)	$-4.4(78)$
	2017	34(13)	$-20(65)$		2017	191(43)	$14(36)$
$N(1520) \ 3/2^-$	2022	$-43(25)$	$-47(20)$	$\Delta(1930) \ 5/2^-$	2022	104(18)	$129(16)$
	2017	$-35(10)$	$-10(7)$		2017	159(133)	$8.7(26.5)$
$N(1675) \ 5/2^-$	2022	25(4)	$-1.2(7.8)$	$\Delta(1905) \ 5/2^+$	2022	55(8)	$-159(3)$
	2017	38(3)	$17(10)$		2017	59(181)	$11(235)$
$N(1680) \ 5/2^+$	2022	$-17(6)$	$70(14)$	$\Delta(1950) \ 7/2^+$	2022	$-31(4)$	$-81(7)$
	2017	$-8.0(1.8)$	$-42(35)$		2017	$-68(29)$	$-49(35)$
$N(1990) \ 7/2^+$	2022	$-30(16)$	$-135(25)$	$\Delta(2200) \ 7/2^-$	2022	104(22)	$-139(3)$
	2017	$-22(48)$	$13(236)$		2017	110(146)	$49(94)$
$N(2190) \ 7/2^-$	2022	$-15(8)$	$111(17)$	$\Delta(2400) \ 9/2^-$	2022	21(14)	$-67(23)$
	2017	$-23(13)$	$70(40)$		2017	14(84)	$58(66)$
$N(2250) \ 9/2^-$	2022	$-108(14)$	$112(7)$				
	2017	$-41(11)$	$-20(68)$				
$N(2220) \ 9/2^+$	2022	357(39)	$-91(7)$				
	2017	536(435)	$69(62)$				
	2022						
	2017						

the $N(1535)1/2^-$ to πN is smaller than in JüBo2017, the $N(1650)1/2^-$ now couples stronger to this channel.

The ηN coupling to the $N(1535)1/2^-$ remains large and takes a very similar value as in previous JüBo studies. The ηN residue of the $N(1650)1/2^-$, however, changes significantly: the new value is almost twice as large as in JüBo2017. We ascribe this change to the recently published polarization data for ηp photoproduction by the CBELSA/TAPS Collaboration [46], which were included in the fit in the present study. The new data on T , E , P , H , and G represent a vital addition to the $\gamma p \rightarrow \eta p$ data base as data on P were very scarce before and data on H and G not available at all. Our fit results for those data are shown in Figs. 17 to 19 in Appendix B. It is interesting to note that the BnGa group observes a very

similar development for the ηN branching ratio of the $N(1650)1/2^-$ when fitting the data, as discussed in detail in Ref. [46].

Both S_{11} states show an increased coupling to the KY channels, referable to the newly included $\gamma p \rightarrow K\Sigma$ reaction. We see no indications for additional poles as, e.g., the $N(1895)1/2^-$ in this partial wave.

In the P_{11} partial wave, we observe a significant change in the analytic structure compared to the JuBo2017 solution. While the Roper resonance is still dynamically generated as in previous studies, the $N(1710)1/2^+$, previously an s -channel pole, is now dynamically generated and moved to a much lower pole position close to the $K\Lambda$ threshold. We also observe a major increase of the residues into the ηN and $K\Lambda$ channels. In addi-

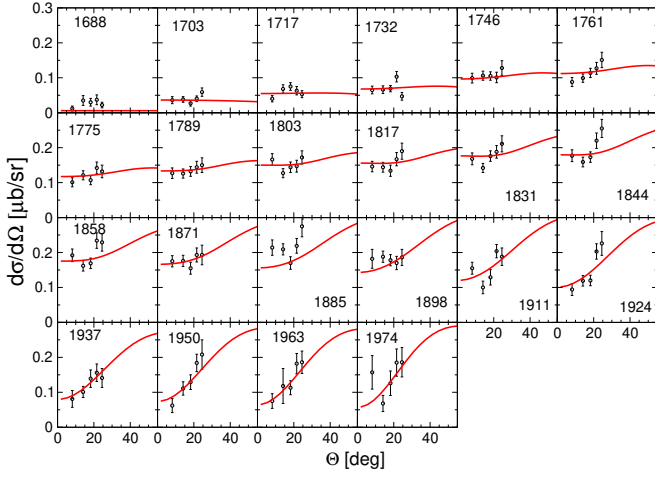


FIG. 2. Fit results (solid (red) lines) for the differential cross section in forward direction of the reaction $\gamma p \rightarrow K^+\Sigma^0$. Data: BGOOD (Jude *et al.* [81]).

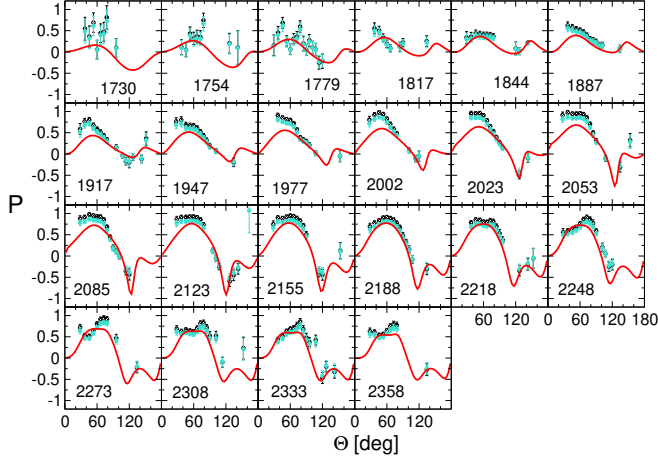


FIG. 3. Selected fit results (solid (red) lines) for the recoil polarization of the reaction $\gamma p \rightarrow K^+\Sigma^0$. Data: (black) circles: CLAS (Dey *et al.* [80]); (turquoise) circles: same data but scaled by the new value of the Λ decay parameter α_- [60]. Data are shown accumulated in energy bins of up to 30 MeV.

tion, the $N(1710)1/2^+$ resonance follows the pronounced structure of the SAID single energy solution (data points in Fig. 9) although the fit (solid red lines) is to the energy-dependent solution (dashed lines) which is rather smooth in the shown energy region. This remarkable property was present in the JuBo2012 and JuBo2015 solutions [14, 57] but disappeared in the JuBo2017 solution [58], until the present study. We interpret this as a strong indication of existence for this resonance.

In contrast to the dynamical $N(1710)1/2^+$, the second s -channel pole in P_{11} (apart from the nucleon), moved far into the complex plane ($W_0 = 1513 - i405$ MeV). Therefore, we do not include this singularity in the resonance tables. The dynamically generated state at

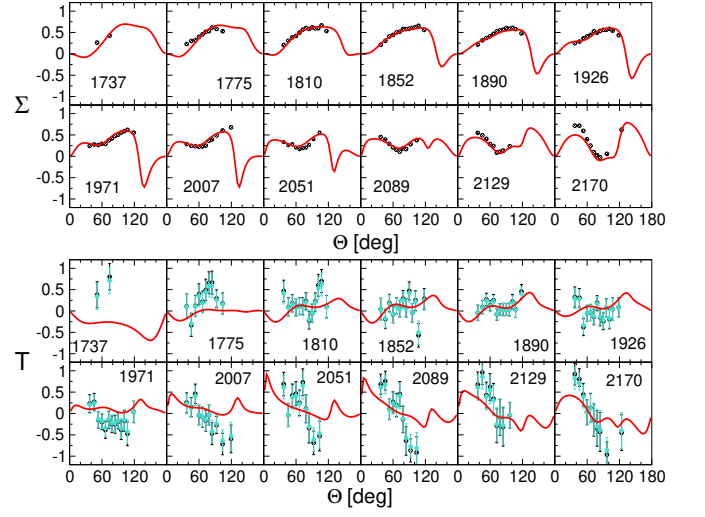


FIG. 4. Fit results (solid (red) lines) for the beam asymmetry Σ and the target asymmetry T of the reaction $\gamma p \rightarrow K^+\Sigma^0$. Data: (black) circles: CLAS (Paterson *et al.* [97]); (turquoise) circles: same data but scaled by the new value of the Λ decay parameter α_- [60].

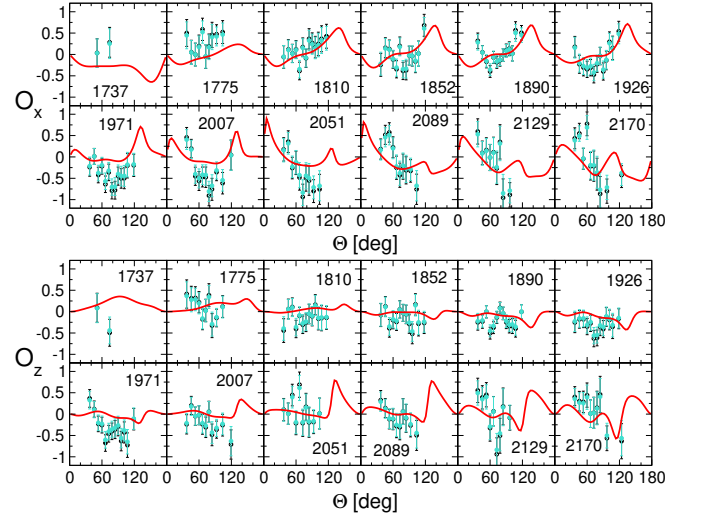


FIG. 5. Fit results (solid (red) lines) for the beam recoil polarizations O_x and O_z of the reaction $\gamma p \rightarrow K^+\Sigma^0$. Data: (black) circles: CLAS (Paterson *et al.* [97]); (turquoise) circles: same data but scaled by the new value of the Λ decay parameter α_- [60].

$W_0 \sim 1750 - i160$ MeV observed in previous JüBo solutions is not seen anymore.

Another change of the analytic structure took place in the P_{33} partial wave. While the $\Delta(1232)$ is very stable with respect to previous JüBo studies [57, 58] and close to the PDG values, the formerly dynamically generated $\Delta(1600)3/2^+$ is now induced by a bare s -channel pole. In contrast, the very broad $\Delta(1920)3/2^+$, previously a s -channel pole, is dynamically generated in the

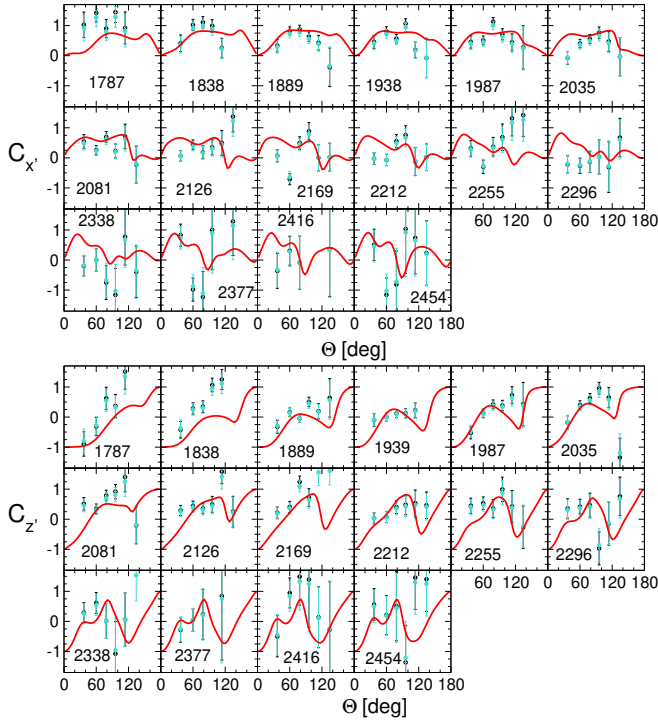


FIG. 6. Fit results (solid (red) lines) for the beam recoil polarizations $C_{x'}$ and $C_{z'}$ of the reaction $\gamma p \rightarrow K^+ \Sigma^0$. Data: (black) circles: CLAS (Bradford *et al.* [98]); (turquoise) circles: same data but scaled by the new value of the Λ decay parameter α_- [60].

present study. The situation in the P_{11} and P_{33} partial wave shows the difficulties in interpreting the dynamical or s -channel (“genuine”) pole nature of a resonance in a complicated multi-channel environment with strong dressing effects that cannot be uniquely separated from “bare” states [14, 53].

The P_{33} wave is one of the dominating partial waves in the $\gamma p \rightarrow K \Sigma$ reactions, c.f. Figs. 10 and 11, reflected by the large photocoupling of the $\Delta(1920)3/2^+$. Of course, it is difficult to interpret this as a sign that this resonance exists, due to its enormous width of more than 800 MeV. It could well be that this state just appears from the specific way our amplitude is parametrized; all that is certain is that the pertaining partial wave, P_{33} , plays a major role in $K \Sigma$ photoproduction.

The P_{13} partial wave features two s -channel poles: the $N(1720)3/2^+$ and the $N(1900)3/2^+$, both rated with 4 stars by the PDG. It was noted by a number of other analysis groups that the latter state plays an important role in KY photoproduction, see, e.g., Refs. [36, 37, 39, 47, 115]. Also in the JüBo model the $N(1900)3/2^+$ was included to improve the fit to $K\Lambda$ photoproduction data [58]. The pole positions of the two P_{13} states found in the present analysis are close to the PDG values. The width of the $N(1900)3/2^+$ is much reduced compared to previous JüBo studies. Although the residue into the $K \Sigma$

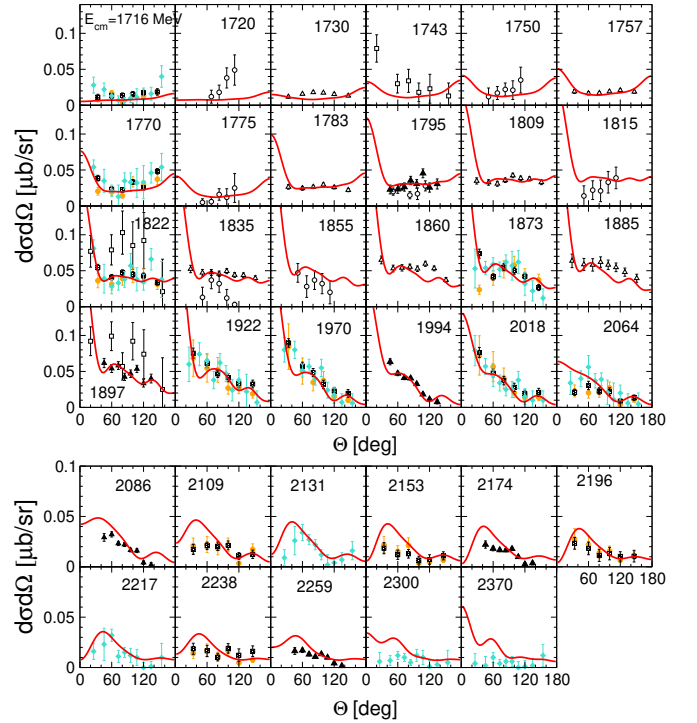


FIG. 7. Fit results (solid (red) lines) for the differential cross section of the reaction $\gamma p \rightarrow K^0 \Sigma^+$. Data: filled (orange) circles: CBELSA/TAPS 2007 [100]; filled (black) squares: CBELSA/TAPS 2011 [101]; filled (turquoise) diamonds: SAPHIR [110]; open circles: A2 MAMI 2018 [76]; open triangles: A2 MAMI 2013 [102]; open squares: SAPHIR 1999 [103] (omitted from fit); filled (black) triangles: JLab Hall B 2003 [99];

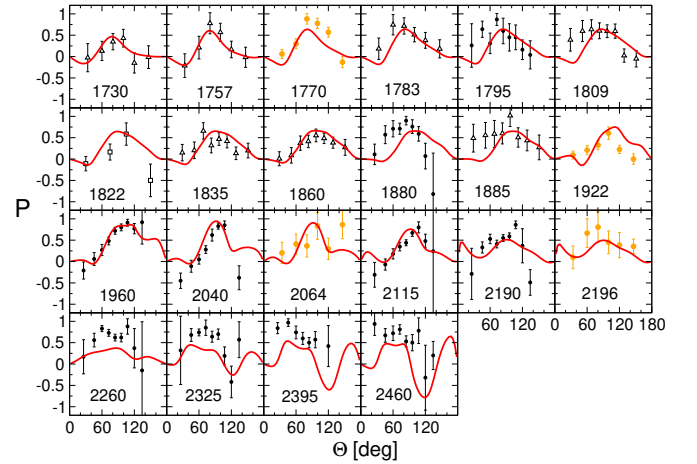


FIG. 8. Fit results (solid (red) lines) for the recoil polarization of the reaction $\gamma p \rightarrow K^0 \Sigma^+$. Data: open triangles: A2 MAMI 2013 [102]; filled (orange) circles: CBELSA/TAPS 2007 [100]; filled (black) circles: CLAS 2013 [104]; open squares: SAPHIR 1999 [103].

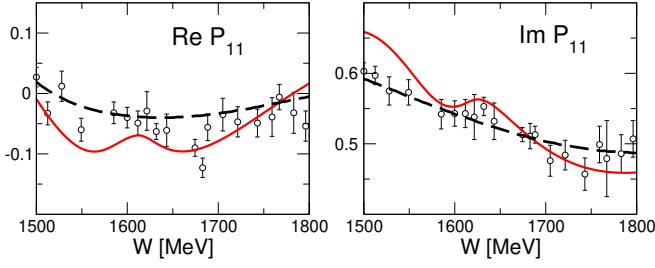


FIG. 9. $\pi N \rightarrow \pi N$ P_{11} partial wave in the region of the $N(1710)1/2^+$: Solid (red) lines: JüBo2022; data points: single-energy solution WI08 GWU/SAID [84]; dashed (black) lines: energy-dependent solution WI08 [84]. Remarkably, the JüBo2022 fit is to that (structureless) energy-dependent solution and blind to the single-energy solution.

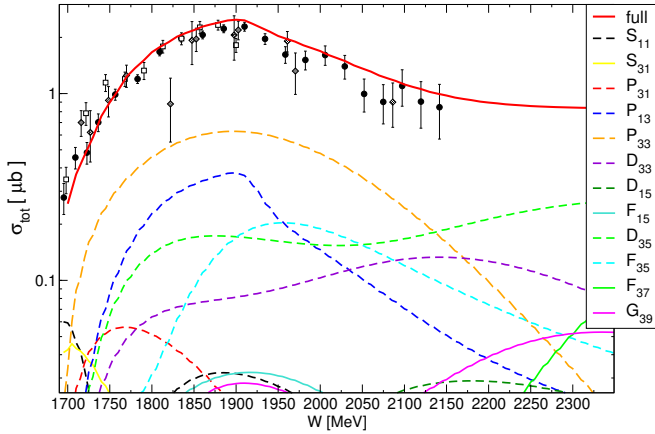


FIG. 10. Total cross section of the reaction $\gamma p \rightarrow K^+ \Sigma^0$ and its partial-wave content on a logarithmic scale (small partial waves not shown). Data: filled (black) circles: SAPHIR 1998 [78]; empty squares: SAPHIR 1994 [77]; filled (gray) diamonds: ABBHHM 1969 [114]). The data are not included in the fit.

channel is considerably smaller than in 2017, the pole is clearly visible in the multipole amplitudes for $\gamma p \rightarrow K \Sigma$, especially in M_{1+} of $K^0 \Sigma^+$, c.f. Fig. 13, where a distinct peak arises at the pole position of the $N(1900)3/2^+$. In the present analysis, this resonance is responsible for the drop of the total cross section in $\gamma p \rightarrow K^+ \Sigma^0$ around $W \sim 1900$ MeV (c.f. Fig. 10) and it also qualitatively explains the “cusp-like” structure observed in a recent measurements of the forward differential cross section for $K^+ \Sigma^0$ photoproduction by the BGOOD experiment [81], as can be seen in Fig. 12. This cusp in the data might be sharper at extreme forward angles [81], but our data description in forward direction is, overall, quite good except for a few points, see Fig. 2.

Although this resonance is also responsible for a sharp drop of the P_{13} contribution to the total cross section of the $K^0 \Sigma^+$ final state as shown in Fig. 11, it does not reproduce the sharp drop of the data around 2 GeV. Note

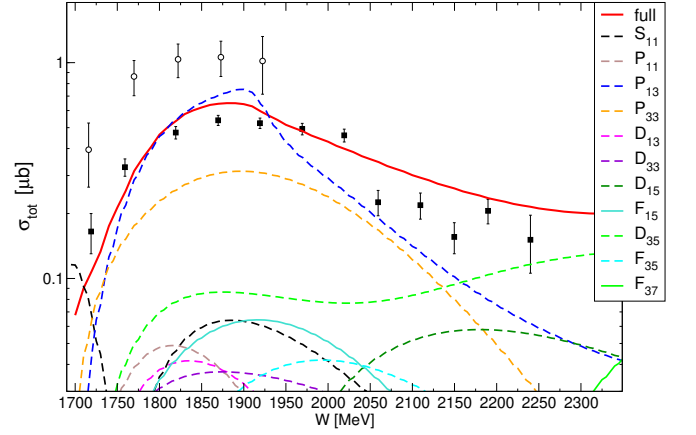


FIG. 11. Total cross section of the reaction $\gamma p \rightarrow K^0 \Sigma^+$ and its partial-wave content on a logarithmic scale (small partial waves not shown). Data: empty circles: SAPHIR 1999 [103]; filled (black) squares: CBELSA/TAPS 2012 [101] (data are not included in the fit).

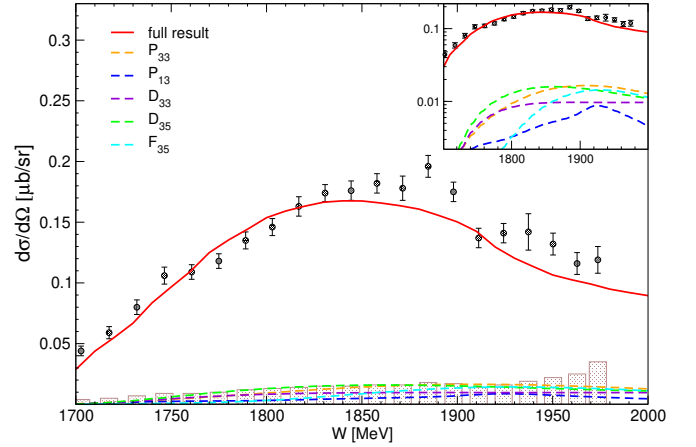


FIG. 12. Forward differential cross section ($\cos \theta > 0.9$) reaction $\gamma p \rightarrow K^+ \Sigma^0$. Only dominant partial waves are shown. The box in the upper right corner shows the same picture on a logarithmic scale. Data from Ref. [81] (not included in the fit). We fit the data shown in Fig. 2 from the same reference. Systematic uncertainties of the data are shown as brown bars.

that we do not include data on total cross section in the fit. A hypothesis for this drop was presented in Ref. [116] that explained it as a cusp from coupled $K^* \Lambda$ and $K^* \Sigma$ channels and their interference; a similar mechanism to explain the sharp structure at around $W \approx 1.68$ GeV in $\gamma n \rightarrow \eta n$ was discussed in Ref. [117]. In any case, these channels alone cannot explain the differential cross sections, either [116], while the forward peak in our solution is at least qualitatively described as Fig. 7 shows. Once our approach includes $K^* Y$ channels, it will be possible to test the cusp hypothesis quantitatively with all available data.

On the other hand, in combination with the

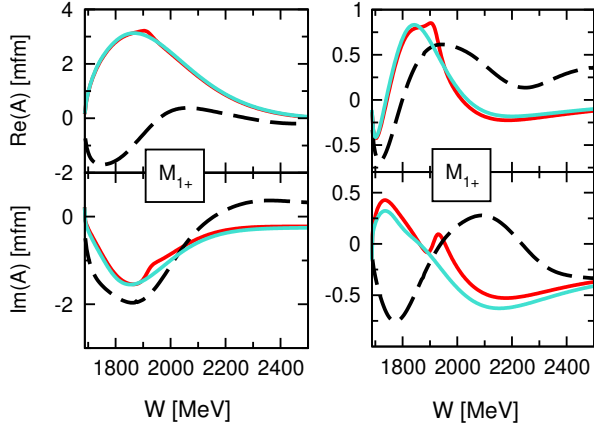


FIG. 13. M_{1+} multipole for the reaction $\gamma p \rightarrow K^+ \Sigma^0$ (left) and $K^0 \Sigma^+$ (right): (Red) solid lines: full solution JüBo2022. (Turquoise) solid lines: JüBo2022 with $N(1900)3/2^+$ switched off. (Black) dashed lines: BG2019 [46].

$N(1720)3/2^+$, which has a larger ηN residue, the $N(1900)3/2^+$ generates the backward peak in the recent beam asymmetry data for $\gamma p \rightarrow \eta p$ by the CBELSA/TAPS Collaboration [83], as shown in Fig. 14: by switching off the two resonance states, the peak for large scattering angle, which occurs in the energy region of the $\eta' p$ threshold of $W = 1896$ MeV, vanishes. In Ref. [83], this backward peak is associated with the $\eta' p$ and further evidence for the $N(1895)1/2^-$ is claimed based on a fit of the data within the BnGa approach. In the current analysis we do not find evidence for the latter state. Note that while the $\eta' p$ channel is not yet included in JüBo, and therefore the $\eta' p$ branch point is missing, the $N(1900)3/2^+$ does not simply simulate this branch point as this state is especially important in KY photoproduction. Furthermore, also the BnGa analysis includes the $N(1900)3/2^+$, despite including the $\eta' p$ explicitly.

As reported in Ref. [83], the BnGa solution introduced the $\eta' N$ channel not only to fit the η beam asymmetry data, but also the η differential cross sections from Ref. [118]. We stress that in the present solution, the data from both References [83, 118] are also well described [73]. More definite statements can be made once the η' channel is included in our analysis.

In the D_{13} partial wave, besides the established $N(1520)3/2^-$, we see indications for a dynamically generated $N(1875)3/2^-$ at $W_0 = 1906(1) - i333(1)$ MeV with a strong coupling to the $\pi\Delta$ channel. While the mass is in agreement with the PDG value of 1900 ± 50 MeV [13], our width is much broader than the PDG value of 160 ± 60 MeV.

A broad dynamically generated pole is also observed in the D_{33} partial wave at $W_0 = 2118(10) - i356(73)$ MeV, which could be associated with the $\Delta(1940)3/2^-$ listed by the PDG [13], although our pole positions differs to

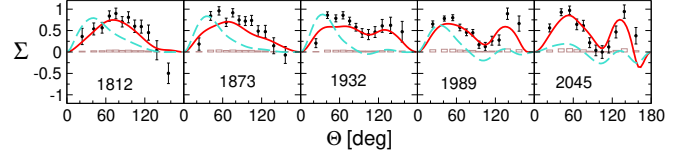


FIG. 14. Fit results for the beam asymmetry Σ of the reaction $\gamma p \rightarrow \eta p$. Solid (red) lines: full results JüBo2022. Dashed (turquoise) lines: JüBo2022 with $N(1720)3/2^+$ and $N(1900)3/2^+$ switched off. Only CBELSA/TAPS [83] data are shown but other data [119, 120] are also included in the analysis.

some extent from the PDG value of $W_0 = 1950 \pm 100 - i(175 \pm 75)$ MeV. This state couples strongly to the $K\Sigma$ channel and, accordingly, around 2.1 GeV the influence of the D_{33} on the $\gamma p \rightarrow K^+ \Sigma^0$ cross section is increasing and it becomes one of the most important partial waves, c.f. Fig. 10. Because both states, $N(1875)3/2^-$ and $\Delta(1940)3/2^-$, need further confirmation we do not list them in Tabs. III and IV.

In the D_{15} partial wave, the $N(1675)5/2^-$ couples strongly to the πN channel and we find resonance parameters similar to the PDG values. The $N(2060)5/2^-$ that was dynamically generated in JüBo2017 [58] is not seen in the present study.

An interesting interplay can be observed in the $I = 3/2$ and $J = 5/2$ partial waves: The $\Delta(1930)5/2^-$ is much broader than in JüBo2017 while the width of the $\Delta(1905)5/2^+$ is significantly reduced. A similar switch of large and small width was observed in previous JüBo analyses. At that time, however, the important information from the $K\Sigma$ photoproduction data for the $I = 3/2$ states was still missing. In the current study, the two partial waves, D_{35} and F_{35} , play an important role in the description of those data especially for the $K^+ \Sigma^0$ final state, as can be seen in Figs. 10 to 11, leading to modified pole positions compared to the JüBo2017 solution.

In the F_{17} partial wave, the pole position of the $N(1990)7/2^+$ changes considerably compared to JüBo2017. The mass is now much closer to the PDG value and the width of 72 MeV is much more narrow. This state is rated with only 2 stars by the PDG, meaning the evidence for existence is only fair. In our present analysis, however, the forward peak in the beam asymmetry data for $\gamma p \rightarrow \eta p$ is to a large extent caused by the $N(1990)7/2^+$. We noticed in previous JüBo studies that the properties of the $N(1990)7/2^+$ are hard to determine. Here, we note that further studies are needed to confirm its remarkably small imaginary part.

At higher energies, also the F_{37} and G_{39} partial waves gain more influence in the $K\Sigma$ cross sections, although they remain comparably small. While the mass of the $\Delta(1950)7/2^+$ is in the same energy range as in 2017, the pole position of the $\Delta(2400)9/2^-$ changed significantly and is now closer to the PDG value. In the G_{39} partial

wave an additional pole at $W_0 = 1941(12) - i260(24)$ MeV is found that couples strongly to πN and $\pi\Delta$. This pole is not listed in Tabs. V and IV as further evidence for this state is required.

On the whole, we find that the reaction $\gamma p \rightarrow K^+\Sigma^0$ is dominated by isospin $I = 3/2$ resonances, with the important exception of the P_{13} partial wave, as can be seen in Fig. 10. Accordingly, the current resonance analysis leads to refined values for the Δ states. The dominance of $I = 3/2$ partial waves in $\gamma p \rightarrow K^+\Sigma^0$ was also noted by the BnGa group in Ref. [15], while the dominant contributions to $\gamma p \rightarrow K^0\Sigma^+$ in that study were nucleon partial waves. Looking at Fig. 11 we can confirm that $I = 1/2$ partial waves play a much bigger role in the $K^0\Sigma^+$ than in the $K^+\Sigma^0$ final state.

Furthermore, we observe that the uncertainties of the Δ resonances are of a similar size as for the N^* states. This was different in JüBo2017 [58], where the mixed-isospin $K\Sigma$ photoproduction channels were not yet included and the Δ states exhibited larger uncertainties than the N^* states in general.

V. CONCLUSION

In the present study, the Jülich-Bonn dynamical coupled-channel model was extended to $K\Sigma$ photoproduction off the proton and recent data sets for other meson photoproduction reactions were included. The approach now describes the pion- and photon-induced production of the πN , ηN , $K\Lambda$ and $K\Sigma$ channels. The amplitudes were determined in a simultaneous fit of all reactions to more than 67,000 data points. Based on those fit results, the spectrum of N^* and Δ resonances was extracted in terms of complex pole positions and residues. All 4-star resonances, except for the $N(1895)1/2^+$, and a number of states rated with less than 4 stars are observed. In addition, we see indication for dynamically generated poles that were not seen in previous JüBo studies and require further confirmation.

We find that the $\gamma p \rightarrow K^+\Sigma^0$ reaction is dominated by $I = 3/2$ partial waves, with the exception of the P_{13} wave. In that partial wave, the $N(1900)3/2^+$ state explains qualitatively the cusp-like structure in the recent BGOOD data [81] for $K^+\Sigma^0$. Moreover, in combination with the $N(1720)3/2^+$ it is responsible for the backward peak observed in a recent CBELSA/TAPS measurement of the beam asymmetry Σ in $\gamma p \rightarrow \eta p$ [83]. The explanation of a sharp decrease of the cross section in $K^0\Sigma^+$ at $W \approx 2$ GeV remains a challenge in the present approach.

Furthermore, the inclusion of the new polarization data T , E , P , H , and G in the same reaction [46] led to a significant change in the ηN residue of the $N(1650)1/2^-$, which is almost twice as large as in previous studies, reducing the striking difference of the ηN residue of the

two S_{11} states. In many cases, the inclusion of the mixed isospin $\gamma p \rightarrow K\Sigma$ data led to refined values for the Δ resonances.

ACKNOWLEDGMENTS

We thank F. Afzal, R. Beck, J. Hartmann, D. Ireland, T. Jude, H. Schmieden, I. Strakovsky, U. Thoma, and R. Workman for useful discussion and for providing data. The authors gratefully acknowledge the computing time granted by the JARA-HPC Vergabegremium on the supercomputer JURECA at Forschungszentrum Jülich. This work is supported in part by DFG and NSFC through funds provided to the Sino-German CRC 110 “Symmetry and the Emergence of Structure in QCD” (NSFC Grant No. 11621131001, DFG Grant No. TRR110), and by VolkswagenStiftung (grant No. 93562). M.D. is supported by the U.S. Department of Energy, Office of Science, Office of Nuclear Physics under grant No. DE-SC0016582 and contract DE-AC05-06OR23177. This material is based upon work supported by the National Science Foundation under Grant No. PHY 2012289. The work of UGM was also supported by the CAS President’s International Fellowship Initiative (PIFI) (Grant No. 2018DM0034).

Appendix A: $K\Sigma$ photoproduction multipoles

In Figs. 15 and 16 we show the multipoles for the reactions $\gamma p \rightarrow K^+\Sigma^0$ and $\gamma p \rightarrow K^0\Sigma^+$, respectively. The current solution JüBo2022 is shown together with the Bonn-Gatchina BG2019 solution [46].

Appendix B: Further fit results

In Figs. 17 to 19 we show fit results for the polarization observables T , E , P , G , and H in $\gamma p \rightarrow \eta p$ by the CBELSA/TAPS collaboration [46]. Although this paper is about $K\Sigma$ photoproduction, the shown data were published between the previous iteration of the JüBo analysis and the present one and are now included in the fits. Also newly included are the MAMI A2 data for the differential cross section in $\gamma p \rightarrow \pi^0 p$ from Ref [121] and in $\gamma p \rightarrow \eta p$ from Ref. [118], as well as the BGOOD data on $d\sigma/d\Omega$ and P at forward angles for $K^+\Lambda$ photoproduction [82]. The corresponding fit results can be found online [73].

Appendix C: Weights applied in the fit to the $\gamma p \rightarrow K^+\Sigma^0$, $K^0\Sigma^+$ data

The data weights in the χ^2 calculation are shown in Table VI.

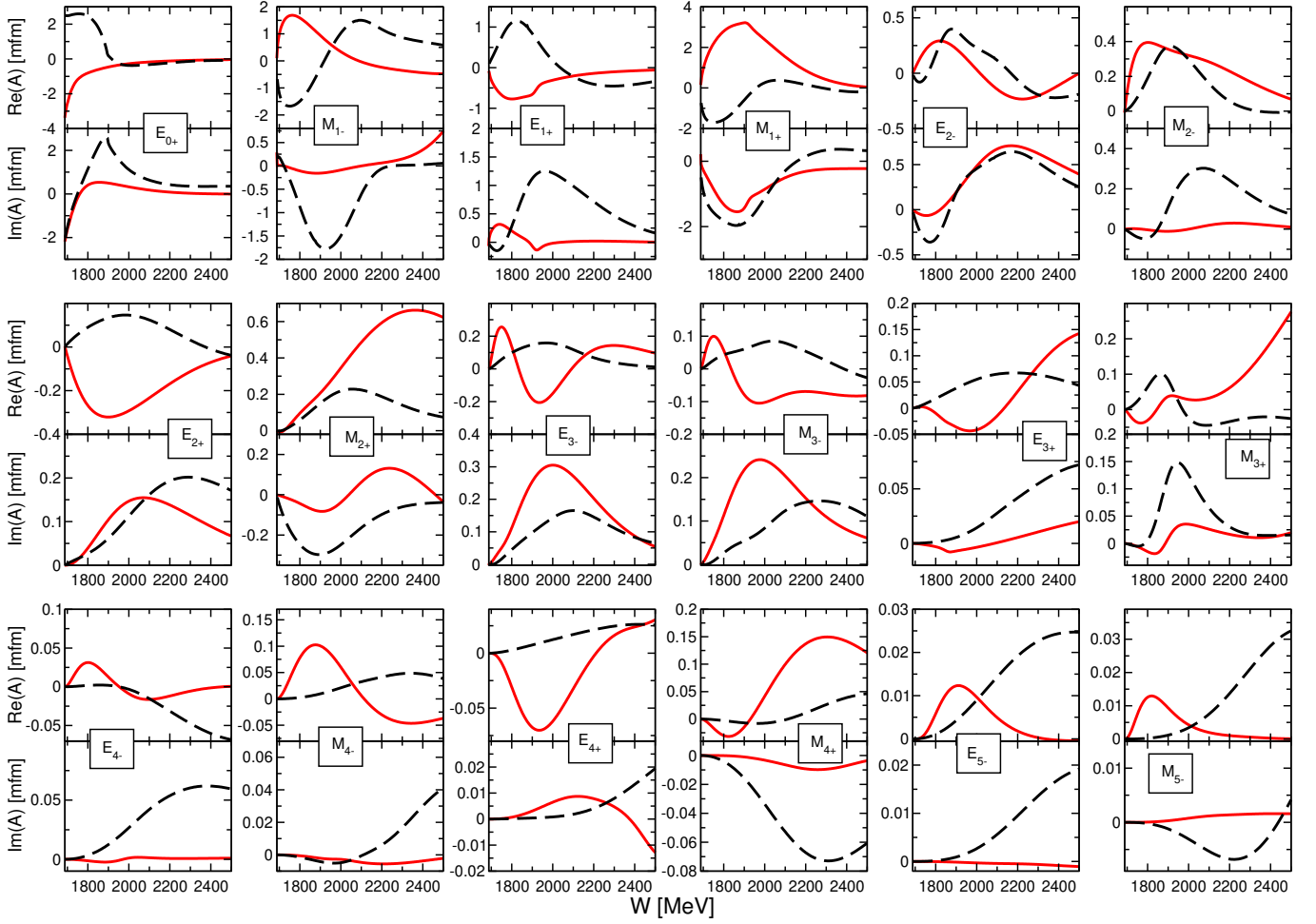


FIG. 15. Electric and magnetic multipoles for the reaction $\gamma p \rightarrow K^+ \Sigma^0$: (Red) solid lines: JüBo2022 (this solution). (Black) dashed lines: BnGa2019 [46].

TABLE VI. Weights applied in the fit to the $\gamma p \rightarrow K \Sigma$ data and energy ranges.

	Observable	Energy range [MeV]	Weight	Observable	Energy range [MeV]	Weight
$\gamma p \rightarrow K^+ \Sigma^0$	$d\sigma/d\Omega$	$1695 < W < 1750$	4	Σ	$1755 < W < 2300$	8
		$1750 < W < 1950$	32	Σ [97]	$1737 < W < 2170$	20
		$1950 < W < 2355$	4			
	$d\sigma/d\Omega$ of Ref. [81]	$1688 < W < 1974$	40			
	P	$1706 < W < 1850$	40	T	$1737 < W < 1900$	175
		$1850 < W < 2360$	20		$1900 < W < 2170$	35
	$C_{x'}$	$1787 < W < 2454$	70	O_x	$1737 < W < 2000$	68
$\gamma p \rightarrow K^0 \Sigma^+$					$2000 < W < 2170$	136
	$C_{z'}$	$1787 < W < 2454$	72	O_z	$1737 < W < 2170$	65
	$d\sigma/d\Omega$	$1690 < W < 2258$	50	P	$1730 < W < 2460$	57
		$1921 < W < 2020, \theta < 66^\circ$	250			

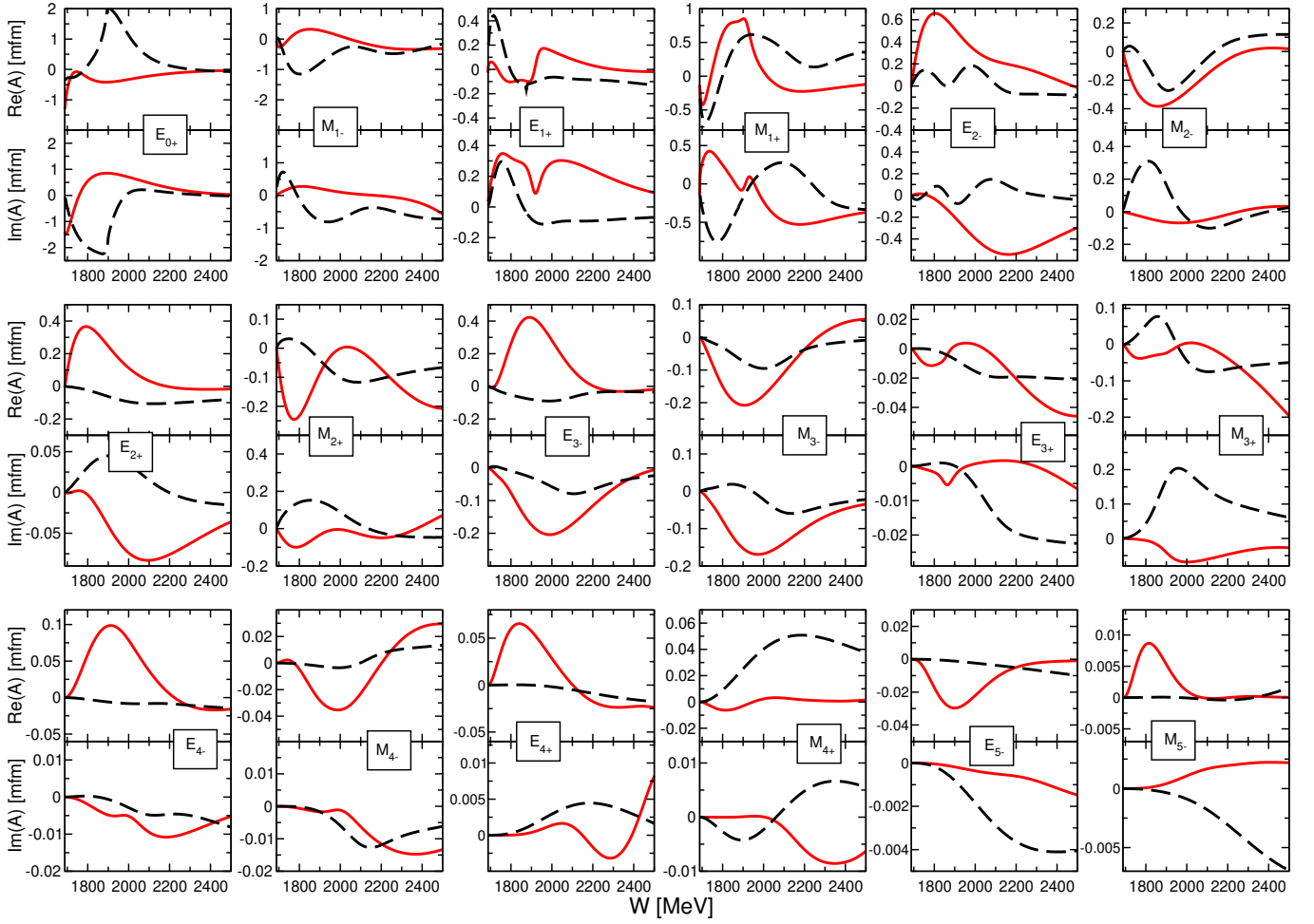


FIG. 16. Electric and magnetic multipoles for the reaction $\gamma p \rightarrow K^0 \Sigma^+$: (Red) solid lines: JüBo2022 (this solution). (Black) dashed lines: BnGa2019 [46].

-
- [1] Simon Capstick and Winston Roberts, “Quasi two-body decays of nonstrange baryons,” *Phys. Rev. D* **49**, 4570–4586 (1994), [arXiv:nucl-th/9310030](#).
 - [2] M. Röniger and B. C. Metsch, “Effects of a spin-flavour dependent interaction on the baryon mass spectrum,” *Eur. Phys. J. A* **47**, 162 (2011), [arXiv:1111.3835 \[hep-ph\]](#).
 - [3] Si-xue Qin, Craig D Roberts, and Sebastian M Schmidt, “Spectrum of light- and heavy-baryons,” *Few Body Syst.* **60**, 26 (2019), [arXiv:1902.00026 \[nucl-th\]](#).
 - [4] Gernot Eichmann, Christian S. Fischer, and Helios Sanchis-Alepuz, “Light baryons and their excitations,” *Phys. Rev. D* **94**, 094033 (2016), [arXiv:1607.05748 \[hep-ph\]](#).
 - [5] Robert G. Edwards, Nilmani Mathur, David G. Richards, and Stephen J. Wallace (Hadron Spectrum), “Flavor structure of the excited baryon spectra from lattice QCD,” *Phys. Rev. D* **87**, 054506 (2013), [arXiv:1212.5236 \[hep-ph\]](#).
 - [6] Georg P. Engel, C. B. Lang, Daniel Mohler, and Andreas Schäfer (BGR), “QCD with Two Light Dynamical Chirally Improved Quarks: Baryons,” *Phys. Rev. D* **87**, 074504 (2013), [arXiv:1301.4318 \[hep-lat\]](#).
 - [7] C. B. Lang, L. Leskovec, M. Padmanath, and S. Prelovsek, “Pion-nucleon scattering in the Roper channel from lattice QCD,” *Phys. Rev. D* **95**, 014510 (2017), [arXiv:1610.01422 \[hep-lat\]](#).
 - [8] Christian Walther Andersen, John Bulava, Ben Hörz, and Colin Morningstar, “Elastic $I = 3/2$ p-wave nucleon-pion scattering amplitude and the $\Delta(1232)$ resonance from $N_f=2+1$ lattice QCD,” *Phys. Rev. D* **97**, 014506 (2018), [arXiv:1710.01557 \[hep-lat\]](#).
 - [9] Giorgio Silvi *et al.*, “P-wave nucleon-pion scattering amplitude in the $\Delta(1232)$ channel from lattice QCD,” *Phys. Rev. D* **103**, 094508 (2021), [arXiv:2101.00689 \[hep-lat\]](#).
 - [10] G. Höhler, *Pion Nucleon Scattering*, edited by H. Schopper, Landolt-Börnstein (Springer, New York, NY, 1983).

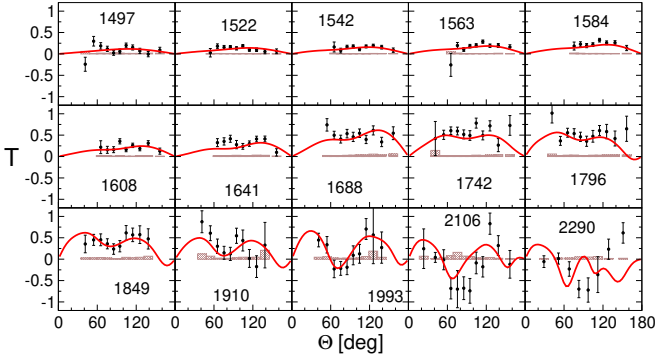


FIG. 17. Fit results of T for the reaction $\gamma p \rightarrow \eta p$. Data: CBELSA/TAPS 2020 [46].

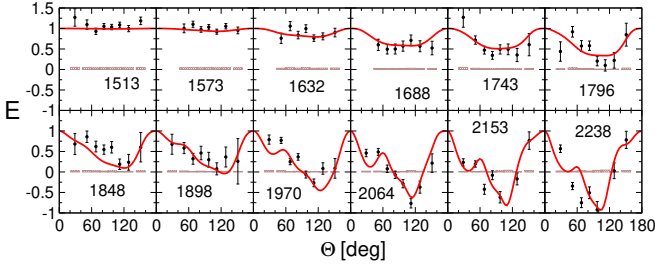


FIG. 18. Fit results of E for the reaction $\gamma p \rightarrow \eta p$. Data: CBELSA/TAPS 2020 [46].

- [11] R. E. Cutkosky, C. P. Forsyth, R. E. Hendrick, and R. L. Kelly, “Pion - Nucleon Partial Wave Amplitudes,” *Phys. Rev. D* **20**, 2839 (1979).
- [12] R. A. Arndt, W. J. Briscoe, I. I. Strakovsky, and R. L. Workman, “Extended partial-wave analysis of πN scattering data,” *Phys. Rev. C* **74**, 045205 (2006), [arXiv:nucl-th/0605082](#).
- [13] R. L. Workman (Particle Data Group), “Review of Particle Physics,” *PTEP* **2022**, 083C01 (2022).

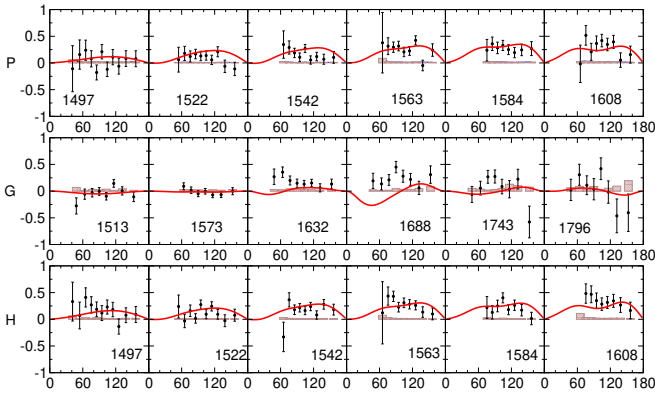


FIG. 19. Fit results of P , G , and H for the reaction $\gamma p \rightarrow \eta p$. Data: CBELSA/TAPS 2020 [46].

- [14] D. Rönchen, M. Döring, F. Huang, H. Haberzettl, J. Haidenbauer, C. Hanhart, S. Krewald, U.-G. Meissner, and K. Nakayama, “Coupled-channel dynamics in the reactions $\pi N \rightarrow \pi N$, ηN , $K\Lambda$, $K\Sigma$,” *Eur. Phys. J. A* **49**, 44 (2013), [arXiv:1211.6998 \[nucl-th\]](#).
- [15] A. V. Anisovich, E. Klempt, V. A. Nikonov, A. V. Sarantsev, and U. Thoma, “Sign ambiguity in the $K\Sigma$ channel,” *Eur. Phys. J. A* **49**, 158 (2013), [arXiv:1310.3610 \[nucl-ex\]](#).
- [16] David G. Ireland, Eugene Pasyuk, and Igor Strakovsky, “Photoproduction Reactions and Non-Strange Baryon Spectroscopy,” *Prog. Part. Nucl. Phys.* **111**, 103752 (2020), [arXiv:1906.04228 \[nucl-ex\]](#).
- [17] Annika Thiel, Farah Afzal, and Yannick Wunderlich, “Light Baryon Spectroscopy,” *Prog. Part. Nucl. Phys.* **125**, 103949 (2022), [arXiv:2202.05055 \[nucl-ex\]](#).
- [18] Maxim Mai, U.-G. Meißner, and Carsten Urbach, “Towards a theory of hadron resonances,” (2022), [arXiv:2206.01477 \[hep-ph\]](#).
- [19] T. C. Jude *et al.*, “Strangeness Photoproduction at the BGO-OD Experiment,” *Phys. Part. Nucl.* **50**, 493–500 (2019), [Erratum: *Phys.Part.Nucl.* 51, 122 (2020)].
- [20] I. S. Barker, A. Donnachie, and J. K. Storrow, “Complete Experiments in Pseudoscalar Photoproduction,” *Nucl. Phys. B* **95**, 347–356 (1975).
- [21] Wen-Tai Chiang and Frank Tabakin, “Completeness rules for spin observables in pseudoscalar meson photoproduction,” *Phys. Rev. C* **55**, 2054–2066 (1997), [arXiv:nucl-th/9611053](#).
- [22] Greg Keaton and Ron Workman, “Ambiguities in the partial wave analysis of pseudoscalar meson photoproduction,” *Phys. Rev. C* **54**, 1437–1440 (1996), [arXiv:nucl-th/9606052](#).
- [23] A. M. Sandorfi, S. Hoblit, H. Kamano, and T. S. H. Lee, “Determining pseudoscalar meson photo-production amplitudes from complete experiments,” *J. Phys. G* **38**, 053001 (2011), [arXiv:1010.4555 \[nucl-th\]](#).
- [24] D. G. Ireland, “Information Content of Polarization Measurements,” *Phys. Rev. C* **82**, 025204 (2010), [arXiv:1004.5250 \[hep-ph\]](#).
- [25] Jannes Nys, Tom Vrancx, and Jan Ryckebusch, “Amplitude extraction in pseudoscalar-meson photoproduction: towards a situation of complete information,” *J. Phys. G* **42**, 034016 (2015), [arXiv:1502.01259 \[nucl-th\]](#).
- [26] Y. Wunderlich, P. Kroenert, F. Afzal, and A. Thiel, “Moravcsik’s theorem on complete sets of polarization observables reexamined,” *Phys. Rev. C* **102**, 034605 (2020), [arXiv:2004.14483 \[nucl-th\]](#).
- [27] R. L. Workman, L. Tiator, Y. Wunderlich, M. Döring, and H. Haberzettl, “Amplitude reconstruction from complete photoproduction experiments and truncated partial-wave expansions,” *Phys. Rev. C* **95**, 015206 (2017), [arXiv:1611.04434 \[nucl-th\]](#).
- [28] L. Tiator, R. L. Workman, Y. Wunderlich, and H. Haberzettl, “Amplitude reconstruction from complete electroproduction experiments and truncated partial-wave expansions,” *Phys. Rev. C* **96**, 025210 (2017), [arXiv:1702.08375 \[nucl-th\]](#).
- [29] Y. Wunderlich, “New graphical criterion for the selection of complete sets of polarization observables and its application to single-meson photoproduction as well as electroproduction,” *Phys. Rev. C* **104**, 045203 (2021), [arXiv:2106.00486 \[nucl-th\]](#).

- [30] Sven Steininger and U.-G. Meißner, “Threshold kaon photoproduction and electroproduction in SU(3) baryon chiral perturbation theory,” *Phys. Lett. B* **391**, 446–450 (1997), [arXiv:nucl-th/9609051](#).
- [31] Maxim Mai, Peter C. Bruns, Bastian Kubis, and U.-G. Meißner, “Aspects of meson-baryon scattering in three and two-flavor chiral perturbation theory,” *Phys. Rev. D* **80**, 094006 (2009), [arXiv:0905.2810 \[hep-ph\]](#).
- [32] Norbert Kaiser, T. Waas, and W. Weise, “SU(3) chiral dynamics with coupled channels: Eta and kaon photoproduction,” *Nucl. Phys. A* **612**, 297–320 (1997), [arXiv:hep-ph/9607459](#).
- [33] B. Borasoy, P. C. Bruns, U.-G. Meißner, and R. Nisßler, “A Gauge invariant chiral unitary framework for kaon photo- and electroproduction on the proton,” *Eur. Phys. J. A* **34**, 161–183 (2007), [arXiv:0709.3181 \[nucl-th\]](#).
- [34] Bojan Golli and Simon Širca, “Eta and kaon production in a chiral quark model,” *Eur. Phys. J. A* **52**, 279 (2016), [arXiv:1604.01937 \[hep-ph\]](#).
- [35] Oren V. Maxwell, “New fit to the reaction $\gamma p \rightarrow K^+ \Sigma^0$,” *Phys. Rev. C* **92**, 044614 (2015).
- [36] Neng-Chang Wei, Ai-Chao Wang, Fei Huang, and Kanzo Nakayama, “Nucleon and Δ resonances in $\gamma n \rightarrow K + \Sigma^-$ photoproduction,” *Phys. Rev. D* **105**, 094017 (2022), [arXiv:2204.13922 \[hep-ph\]](#).
- [37] T. Mart and S. Sakinah, “Multipoles model for $K^+ \Lambda$ photoproduction on the nucleon reexamined,” *Phys. Rev. C* **95**, 045205 (2017).
- [38] T. Mart and M. J. Kholili, “Partial wave analysis for $K \Sigma$ photoproduction on the nucleon valid from threshold up to $W = 2.8$ GeV,” *J. Phys. G* **46**, 105112 (2019).
- [39] S. Clymton and T. Mart, “Extracting the pole and Breit-Wigner properties of nucleon and Δ resonances from the $\gamma N \rightarrow K \Sigma$ photoproduction,” *Phys. Rev. D* **104**, 056015 (2021), [arXiv:2104.10333 \[hep-ph\]](#).
- [40] N. H. Luthfiyah and T. Mart, “Role of the high-spin nucleon and delta resonances in the $K \Lambda$ and $K \Sigma$ photoproduction off the nucleon,” *Phys. Rev. D* **104**, 076022 (2021), [arXiv:2110.01789 \[hep-ph\]](#).
- [41] M. V. Egorov and V. I. Postnikov, “Kaon Electroproduction on the Proton,” *J. Exp. Theor. Phys.* **133**, 32–43 (2021).
- [42] F. X. Lee, T. Mart, C. Bennhold, and L. E. Wright, “Quasifree kaon photoproduction on nuclei,” *Nucl. Phys. A* **695**, 237–272 (2001), [arXiv:nucl-th/9907119](#).
- [43] Lothar Tiator, “The MAID Legacy and Future,” *Few Body Syst.* **59**, 21 (2018), [arXiv:1801.04777 \[nucl-th\]](#).
- [44] T. Corthals, D. G. Ireland, T. Van Cauteren, and J. Ryckebusch, “Regge-plus-resonance treatment of the $p(\gamma, K^+) \Sigma^0$ and $p(\gamma, K^0) \Sigma^+$ reactions at forward kaon angles,” *Phys. Rev. C* **75**, 045204 (2007), [arXiv:nucl-th/0612085](#).
- [45] A. V. Anisovich, R. Beck, E. Klempt, V. A. Nikonov, A. V. Sarantsev, and U. Thoma, “Properties of baryon resonances from a multichannel partial wave analysis,” *Eur. Phys. J. A* **48**, 15 (2012), [arXiv:1112.4937 \[hep-ph\]](#).
- [46] J. Müller *et al.* (CBELSA/TAPS), “New data on $\bar{\gamma} p \rightarrow \eta p$ with polarized photons and protons and their implications for $N^* \rightarrow N \eta$ decays,” *Phys. Lett. B* **803**, 135323 (2020), [arXiv:1909.08464 \[nucl-ex\]](#).
- [47] Xu Cao, V. Shklyar, and H. Lenske, “Coupled-channel analysis of $K \Sigma$ production on the nucleon up to 2.0 GeV,” *Phys. Rev. C* **88**, 055204 (2013), [arXiv:1303.2604 \[nucl-th\]](#).
- [48] H. Kamano, S. X. Nakamura, T. S. H. Lee, and T. Sato, “Nucleon resonances within a dynamical coupled-channels model of πN and γN reactions,” *Phys. Rev. C* **88**, 035209 (2013), [arXiv:1305.4351 \[nucl-th\]](#).
- [49] H. Kamano, S. X. Nakamura, T. S. H. Lee, and T. Sato, “Isospin decomposition of $\gamma N \rightarrow N^*$ transitions within a dynamical coupled-channels model,” *Phys. Rev. C* **94**, 015201 (2016), [arXiv:1605.00363 \[nucl-th\]](#).
- [50] H. Kamano, T. S. H. Lee, S. X. Nakamura, and T. Sato, “The ANL-Osaka Partial-Wave Amplitudes of πN and γN Reactions,” (2019), [arXiv:1909.11935 \[nucl-th\]](#).
- [51] Argonne/ANL-Osaka website, <https://www.phy.anl.gov/theory/research/anl-osaka-pwa>.
- [52] C. Schütz, J. W. Durso, K. Holinde, and J. Speth, “Role of correlated two pion exchange in πN scattering,” *Phys. Rev. C* **49**, 2671–2687 (1994).
- [53] M. Döring, C. Hanhart, F. Huang, S. Krewald, and U.-G. Meißner, “The Role of the background in the extraction of resonance contributions from meson-baryon scattering,” *Phys. Lett. B* **681**, 26–31 (2009), [arXiv:0903.1781 \[nucl-th\]](#).
- [54] M. Döring, C. Hanhart, F. Huang, S. Krewald, and U.-G. Meißner, “Analytic properties of the scattering amplitude and resonances parameters in a meson exchange model,” *Nucl. Phys. A* **829**, 170–209 (2009), [arXiv:0903.4337 \[nucl-th\]](#).
- [55] M. Döring, C. Hanhart, F. Huang, S. Krewald, U.-G. Meißner, and D. Rönchen, “The reaction $\pi^+ p \rightarrow K^+ \Sigma^+$ in a unitary coupled-channels model,” *Nucl. Phys. A* **851**, 58–98 (2011), [arXiv:1009.3781 \[nucl-th\]](#).
- [56] D. Rönchen, M. Döring, F. Huang, H. Haberzettl, J. Haidenbauer, C. Hanhart, S. Krewald, U.-G. Meißner, and K. Nakayama, “Photocouplings at the Pole from Pion Photoproduction,” *Eur. Phys. J. A* **50**, 101 (2014), [Erratum: *Eur. Phys. J. A* **51**, 63 (2015)], [arXiv:1401.0634 \[nucl-th\]](#).
- [57] D. Rönchen, M. Döring, H. Haberzettl, J. Haidenbauer, U.-G. Meißner, and K. Nakayama, “Eta photoproduction in a combined analysis of pion- and photon-induced reactions,” *Eur. Phys. J. A* **51**, 70 (2015), [arXiv:1504.01643 \[nucl-th\]](#).
- [58] D. Rönchen, M. Döring, and U. G. Meißner, “The impact of $K^+ \Lambda$ photoproduction on the resonance spectrum,” *Eur. Phys. J. A* **54**, 110 (2018), [arXiv:1801.10458 \[nucl-th\]](#).
- [59] M. Ablikim *et al.* (BESIII), “Polarization and Entanglement in Baryon-Antibaryon Pair Production in Electron-Positron Annihilation,” *Nature Phys.* **15**, 631–634 (2019), [arXiv:1808.08917 \[hep-ex\]](#).
- [60] D. G. Ireland, M. Döring, D. I. Glazier, J. Haidenbauer, M. Mai, R. Murray-Smith, and D. Rönchen, “Kaon Photoproduction and the Λ Decay Parameter α_- ,” *Phys. Rev. Lett.* **123**, 182301 (2019), [arXiv:1904.07616 \[nucl-ex\]](#).
- [61] M. Ablikim *et al.* (BESIII), “Precision measurements of decay parameters and CP asymmetry in Λ decays,” (2022), [arXiv:2204.11058 \[hep-ex\]](#).
- [62] Maxim Mai, Michael Döring, Carlos Granados, Helmut Haberzettl, U.-G. Meißner, Deborah Rönchen, Igor Strakovsky, and Ron Workman (Jülich-Bonn-Washington), “Jülich-Bonn-Washington model for pion electroproduction multipoles,” *Phys. Rev. C* **103**, 065204 (2021), [arXiv:2104.07312 \[nucl-th\]](#).

- [63] Maxim Mai, Michael Döring, Carlos Granados, Helmut Haberzettl, Jackson Hergenrather, U.-G. Meißner, Deborah Rönchen, Igor Strakovsky, and Ron Workman (Jülich-Bonn-Washington), “Coupled-channel analysis of pion- and eta-electroproduction with the Jülich-Bonn-Washington model,” (2021), [10.1103/Phys-RevC.106.015201](#), [arXiv:2111.04774 \[nucl-th\]](#).
- [64] D. S. Carman *et al.* (CLAS), “Beam-Recoil Transferred Polarization in K^+Y Electroproduction in the Nucleon Resonance Region with CLAS12,” *Phys. Rev. C* **105**, 065201 (2022), [arXiv:2202.03398 \[nucl-ex\]](#).
- [65] Daniel S. Carman (CLAS), “Excited nucleon spectrum and structure studies with CLAS and CLAS12,” *AIP Conf. Proc.* **2249**, 030004 (2020), [arXiv:1907.02407 \[nucl-ex\]](#).
- [66] Chao-Wei Shen, Deborah Rönchen, U.-G. Meißner, and Bing-Song Zou, “Exploratory study of possible resonances in heavy meson - heavy baryon coupled-channel interactions,” *Chin. Phys. C* **42**, 023106 (2018), [arXiv:1710.03885 \[hep-ph\]](#).
- [67] Zheng-Li Wang, Chao-Wei Shen, Deborah Rönchen, U.-G. Meißner, and Bing-Song Zou, “Resonances in heavy meson-heavy baryon coupled-channel interactions,” *Eur. Phys. J. C* **82**, 497 (2022), [arXiv:2204.12122 \[hep-ph\]](#).
- [68] Y.-F. Wang, D. Rönchen, U.-G. Meißner *et al.*, in preparation (2022).
- [69] M. Mai, B. Hu, M. Döring, A. Pilloni, and A. Szczepaniak, “Three-body Unitarity with Isobars Revisited,” *Eur. Phys. J. A* **53**, 177 (2017), [arXiv:1706.06118 \[nucl-th\]](#).
- [70] F. Huang, M. Döring, H. Haberzettl, J. Haidenbauer, C. Hanhart, S. Krewald, U.-G. Meißner, and K. Nakayama, “Pion photoproduction in a dynamical coupled-channels model,” *Phys. Rev. C* **85**, 054003 (2012), [arXiv:1110.3833 \[nucl-th\]](#).
- [71] SAID/GWU website, <http://gwdac.phys.gwu.edu>.
- [72] Website of Bonn-Gatchina group with analysis results, <https://pwa.hiskp.uni-bonn.de>.
- [73] Figures representing the full fit result of this study, including a display of all data, <http://collaborations.fz-juelich.de/ikp/meson-baryon/main>.
- [74] N. Zachariou *et al.* (CLAS), “Beam-spin asymmetry Σ for Σ^- hyperon photoproduction off the neutron,” *Phys. Lett. B* **827**, 136985 (2022), [arXiv:2106.13957 \[nucl-ex\]](#).
- [75] K. Kohl *et al.* (BGOOD), “Measurement of the $\gamma n \rightarrow K^0 \Sigma^0$ differential cross section over the K^* threshold,” (2021), [arXiv:2108.13319 \[nucl-ex\]](#).
- [76] C. S. Akondi *et al.* (A2), “Experimental study of the $\gamma p \rightarrow K^0 \Sigma^+$, $\gamma n \rightarrow K^0 \Lambda$, and $\gamma n \rightarrow K^0 \Sigma^0$ reactions at the Mainz Microtron,” *Eur. Phys. J. A* **55**, 202 (2019), [arXiv:1811.05547 \[nucl-ex\]](#).
- [77] M. Bockhorst *et al.*, “Measurement of $\gamma p \rightarrow K^+ \Lambda$ and $\gamma p \rightarrow K^+ \Sigma^0$ at photon energies up to 1.47-GeV,” *Z. Phys. C* **63**, 37–47 (1994).
- [78] M. Q. Tran *et al.* (SAPHIR), “Measurement of $\gamma p \rightarrow K^+ \Lambda$ and $\gamma p \rightarrow K^+ \Sigma^0$ at photon energies up to 2-GeV,” *Phys. Lett. B* **445**, 20–26 (1998).
- [79] K. H. Glander *et al.*, “Measurement of $\gamma p \rightarrow K^+ \Lambda$ and $\gamma p \rightarrow K^+ \Sigma^0$ at photon energies up to 2.6-GeV,” *Eur. Phys. J. A* **19**, 251–273 (2004), [arXiv:nucl-ex/0308025](#).
- [80] B. Dey *et al.* (CLAS), “Differential cross sections and recoil polarizations for the reaction $\gamma p \rightarrow K^+ \Sigma^0$,” *Phys. Rev. C* **82**, 025202 (2010), [arXiv:1006.0374 \[nucl-ex\]](#).
- [81] T. C. Jude *et al.*, “Observation of a cusp-like structure in the $\gamma p \rightarrow K^+ \Sigma^0$ cross section at forward angles and low momentum transfer,” *Phys. Lett. B* **820**, 136559 (2021), [arXiv:2006.12437 \[nucl-ex\]](#).
- [82] S. Alef *et al.*, “ $K^+ \Lambda$ photoproduction at forward angles and low momentum transfer,” *Eur. Phys. J. A* **57**, 80 (2021), [arXiv:2006.12350 \[nucl-ex\]](#).
- [83] F. Afzal *et al.* (CBELSA/TAPS), “Observation of the $p\eta'$ Cusp in the New Precise Beam Asymmetry Σ Data for $\gamma p \rightarrow p\eta$,” *Phys. Rev. Lett.* **125**, 152002 (2020), [arXiv:2009.06248 \[nucl-ex\]](#).
- [84] R. L. Workman, R. A. Arndt, W. J. Briscoe, M. W. Paris, and I. I. Strakovsky, “Parameterization dependence of T matrix poles and eigenphases from a fit to πN elastic scattering data,” *Phys. Rev. C* **86**, 035202 (2012), [arXiv:1204.2277 \[hep-ph\]](#).
- [85] H. M. Brody, A. M. Wetherell, and R. L. Walker, “Photoproduction of K^+ Mesons in Hydrogen,” *Phys. Rev.* **119**, 1710–1716 (1960).
- [86] R. L. Anderson, E. Gabathuler, D. Jones, B. D. McDaniell, and A. J. Sadoff, “Photoproduction of K^+ mesons in hydrogen,” *Phys. Rev. Lett.* **9**, 131–133 (1962).
- [87] T. Fujii *et al.*, “Photoproduction of k^+ mesons and polarization of Λ hyperons in the 1-gev range,” *Phys. Rev. D* **2**, 439–448 (1970).
- [88] A. Bleckmann, S. Herda, U. Opara, W. Schulz, W. J. Schille, and H. Urbahn, “Photoproduction of k^+ Λ and k^+ Σ^0 from hydrogen between 1.3 and 1.45 gev,” *Z. Phys.* **239**, 1–15 (1970).
- [89] P. Feller, D. Menze, U. Opara, W. Schulz, and W. J. Schille, “Photoproduction of k^+ Λ and k^+ Σ^0 from hydrogen at constant momentum transfer t between 1.05 and 2.2 gev,” *Nucl. Phys. B* **39**, 413–420 (1972).
- [90] J. W. C. McNabb *et al.* (CLAS), “Hyperon photoproduction in the nucleon resonance region,” *Phys. Rev. C* **69**, 042201 (2004), [arXiv:nucl-ex/0305028](#).
- [91] R. Bradford *et al.* (CLAS), “Differential cross sections for $\gamma + p \rightarrow K^+ + Y$ for Λ and Σ^0 hyperons,” *Phys. Rev. C* **73**, 035202 (2006), [arXiv:nucl-ex/0509033](#).
- [92] M. Sumihama *et al.* (LEPS), “The $\bar{\gamma} p \rightarrow K^+ \Lambda$ and $\bar{\gamma} p \rightarrow K^+ \Sigma^0$ reactions at forward angles with photon energies from 1.5 GeV to 2.4 GeV,” *Phys. Rev. C* **73**, 035214 (2006), [arXiv:hep-ex/0512053](#).
- [93] H. Kohri *et al.*, “Differential cross section and photon beam asymmetry for the $\bar{\gamma} n \rightarrow K^+ \Sigma^-$ reaction at $E_\gamma = 1.5$ GeV–2.4 GeV,” *Phys. Rev. Lett.* **97**, 082003 (2006), [arXiv:hep-ex/0602015](#).
- [94] T. C. Jude *et al.* (Crystal Ball at MAMI), “ $K^+ \Lambda$ and $K^+ \Sigma^0$ photoproduction with fine center-of-mass energy resolution,” *Phys. Lett. B* **735**, 112–118 (2014), [arXiv:1308.5659 \[nucl-ex\]](#).
- [95] A. Lleres *et al.*, “Polarization observable measurements for $\gamma p \rightarrow K^+ \Lambda$ and $\gamma p \rightarrow K^+ \Sigma^0$ for energies up to 1.5-GeV,” *Eur. Phys. J. A* **31**, 79–93 (2007).
- [96] R. G. T. Zegers *et al.* (LEPS), “Beam polarization asymmetries for the $p(\gamma, K^+) \Lambda$ and $p(\gamma, K^+) \Sigma^0$ reactions at $E_\gamma = 1.5$ GeV - 2.4 GeV,” *Phys. Rev. Lett.* **91**, 092001 (2003), [arXiv:nucl-ex/0302005](#).
- [97] C. A. Paterson *et al.* (CLAS), “Photoproduction of Λ and Σ^0 hyperons using linearly polarized photons,” *Phys. Rev. C* **93**, 065201 (2016), [arXiv:1603.06492 \[nucl-ex\]](#).

- ex].
- [98] R. K. Bradford *et al.* (CLAS), “First measurement of beam-recoil observables $C(x)$ and $C(z)$ in hyperon photoproduction,” *Phys. Rev. C* **75**, 035205 (2007), [arXiv:nucl-ex/0611034](#).
 - [99] Bryan Carnahan, *Strangeness photoproduction in the $\gamma p \rightarrow K^0 \Sigma^+$ reaction*, *Ph.D. thesis*, Catholic U. America (2003).
 - [100] R. Castelijns *et al.* (CBELSA/TAPS), “Nucleon resonance decay by the $K^0 \Sigma^+$ channel,” *Eur. Phys. J. A* **35**, 39–45 (2008), [arXiv:nucl-ex/0702033](#).
 - [101] R. Ewald *et al.* (CBELSA/TAPS), “Anomaly in the $K_S^0 \Sigma^+$ photoproduction cross section off the proton at the K^* threshold,” *Phys. Lett. B* **713**, 180–185 (2012), [arXiv:1112.0811 \[nucl-ex\]](#).
 - [102] P. Aguar-Bartolome *et al.* (A2), “Measurement of the $\gamma p \rightarrow K^0 \Sigma^+$ reaction with the Crystal Ball/TAPS detectors at the Mainz Microtron,” *Phys. Rev. C* **88**, 044601 (2013), [arXiv:1306.1243 \[hep-ex\]](#).
 - [103] S Goers *et al.* (SAPHIR), “Measurement of $\gamma p \rightarrow K^0 \Sigma^+$ at photon energies up to 1.55-GeV,” *Phys. Lett. B* **464**, 331–338 (1999).
 - [104] C. S. Nepali *et al.* (CLAS), “Transverse polarization of $\Sigma^+(1189)$ in photoproduction on a hydrogen target in CLAS,” *Phys. Rev. C* **87**, 045206 (2013), [arXiv:1302.0322 \[nucl-ex\]](#).
 - [105] Philipp Thörnig, “JURECA: Data centric and booster modules implementing the modular supercomputing architecture at jülich supercomputing centre,” *J. large-scale res. facil. JLSRF* **7** (2021).
 - [106] V. Baru, C. Hanhart, M. Hoferichter, B. Kubis, A. Nogga, and D. R. Phillips, “Precision calculation of threshold $\pi^- d$ scattering, πN scattering lengths, and the GMO sum rule,” *Nucl. Phys. A* **872**, 69–116 (2011), [arXiv:1107.5509 \[nucl-th\]](#).
 - [107] J. Landay, M. Döring, C. Fernández-Ramírez, B. Hu, and R. Molina, “Model Selection for Pion Photoproduction,” *Phys. Rev. C* **95**, 015203 (2017), [arXiv:1610.07547 \[nucl-th\]](#).
 - [108] J. Landay, M. Mai, M. Döring, H. Haberzettl, and K. Nakayama, “Towards the Minimal Spectrum of Excited Baryons,” *Phys. Rev. D* **99**, 016001 (2019), [arXiv:1810.00075 \[nucl-th\]](#).
 - [109] M. Döring, J. Revier, D. Rönchen, and R. L. Workman, “Correlations of πN partial waves for multireaction analyses,” *Phys. Rev. C* **93**, 065205 (2016), [arXiv:1603.07265 \[nucl-th\]](#).
 - [110] R. Lawall *et al.*, “Measurement of the reaction $\gamma p \rightarrow K^0 \Sigma^+$ at photon energies up to 2.6 GeV,” *Eur. Phys. J. A* **24**, 275–286 (2005), [arXiv:nucl-ex/0504014](#).
 - [111] Daniel Sadasivan, Andrei Alexandru, Hakan Akdag, Felipe Amorim, Ruairí Brett, Chris Culver, Michael Döring, Frank X. Lee, and Maxim Mai, “Pole position of the $a_1(1260)$ resonance in a three-body unitary framework,” *Phys. Rev. D* **105**, 054020 (2022), [arXiv:2112.03355 \[hep-ph\]](#).
 - [112] S. Ceci, M. Döring, C. Hanhart, S. Krewald, U.-G. Meißner, and A. Svarc, “Relevance of complex branch points for partial wave analysis,” *Phys. Rev. C* **84**, 015205 (2011), [arXiv:1104.3490 \[nucl-th\]](#).
 - [113] V. Sokhoyan *et al.* (CBELSA/TAPS), “High-statistics study of the reaction $\gamma p \rightarrow p \ 2\pi^0$,” *Eur. Phys. J. A* **51**, 95 (2015), [Erratum: *Eur.Phys.J.A* 51, 187 (2015)], [arXiv:1507.02488 \[nucl-ex\]](#).
 - [114] R. Erbe *et al.* (Aachen-Berlin-Bonn-Hamburg-Heidelberg-Muenchen), “Multipion and strange-particle photoproduction on protons at energies up to 5.8-GeV,” *Phys. Rev.* **188**, 2060–2077 (1969).
 - [115] A. V. Anisovich *et al.*, “Strong evidence for nucleon resonances near 1900 MeV,” *Phys. Rev. Lett.* **119**, 062004 (2017), [arXiv:1712.07549 \[nucl-ex\]](#).
 - [116] A. Ramos and E. Oset, “The role of vector-baryon channels and resonances in the $\gamma p \rightarrow K^0 \Sigma^+$ and $\gamma n \rightarrow K^0 \Sigma^0$ reactions near the $K^* \Lambda$ threshold,” *Phys. Lett. B* **727**, 287–292 (2013), [arXiv:1304.7975 \[nucl-th\]](#).
 - [117] M. Döring and K. Nakayama, “On the cross section ratio σ_n/σ_p in η photoproduction,” *Phys. Lett. B* **683**, 145–149 (2010), [arXiv:0909.3538 \[nucl-th\]](#).
 - [118] V. L. Kashevarov *et al.* (A2), “Study of η and η' Photoproduction at MAMI,” *Phys. Rev. Lett.* **118**, 212001 (2017), [arXiv:1701.04809 \[nucl-ex\]](#).
 - [119] P. Collins *et al.* (CLAS), “Photon beam asymmetry Σ for η and η' photoproduction from the proton,” *Phys. Lett. B* **771**, 213–221 (2017), [arXiv:1703.00433 \[nucl-ex\]](#).
 - [120] O. Bartalini *et al.* (GRAAL), “Measurement of eta photoproduction on the proton from threshold to 1500 MeV,” *Eur. Phys. J. A* **33**, 169–184 (2007), [arXiv:0707.1385 \[nucl-ex\]](#).
 - [121] P. Adlarson *et al.* (A2), “Measurement of π^0 photoproduction on the proton at MAMI C,” *Phys. Rev. C* **92**, 024617 (2015), [arXiv:1506.08849 \[hep-ex\]](#).